

The Institutionalisation of Sami Interest in Municipal Comprehensive Planning: A Comparison Between Norway and Sweden

Therese Bjärstig, Vigdis Nygaard, Jan Åge Riseth et Camilla Sandström

Volume 11, numéro 2, 2020

URI : <https://id.erudit.org/iderudit/1069635ar>
DOI : <https://doi.org/10.18584/iipj.2020.11.2.10574>

[Aller au sommaire du numéro](#)

Éditeur(s)

Scholarship@Western (Western University)

ISSN

1916-5781 (numérique)

[Découvrir la revue](#)

Citer cet article

Bjärstig, T., Nygaard, V., Riseth, J. & Sandström, C. (2020). The Institutionalisation of Sami Interest in Municipal Comprehensive Planning: A Comparison Between Norway and Sweden. *The International Indigenous Policy Journal*, 11(2), 1–24. <https://doi.org/10.18584/iipj.2020.11.2.10574>

Résumé de l'article

The Sami are recognized as an Indigenous people and a national minority in both Norway and Sweden, and their involvement in any planning concerning their traditional territories is required. The aim of this article is to examine how Sami interests are secured and institutionalized in municipal comprehensive planning (MCP). We use two case study areas: Sortland municipality in Norway and Vilhelmina municipality in Sweden. Analysis of various qualitative materials indicates that, despite contextual and institutional differences, the planning processes in the case study areas have similar outcomes. We conclude that formal rights of the Sami are not always acknowledged by the politicians who make the final decision. Rather, the Sami depend on the politicians' willingness to consider their needs.





April 2020

The Institutionalisation of Sami Interest in Municipal Comprehensive Planning: A Comparison Between Norway and Sweden

Therese Bjärstig

Department of Political Science, Umeå University, Umeå, Sweden, therese.bjarstig@umu.se

Vigdis Nygaard

Norwegian Research Center (NORCE), Angi Alta, Norway, viny@norceresearch.no

Jan Åge Riseth

Norwegian Research Center (NORCE), Tromsø, Norway, jris@norceresearch.no

Camilla Sandström

Department of Political Science, Umeå University, Umeå, Sweden, camilla.sandstrom@umu.se

Recommended Citation

Bjärstig, T., Nygaard, V., Riseth, J. A., & Sandström, C. (2020). The Institutionalisation of Sami Interest in Municipal Comprehensive Planning: A Comparison Between Norway and Sweden. *The International Indigenous Policy Journal*, 11 (2). <https://www.doi.org/10.18584/iipj.2020.11.2.10574>

The Institutionalisation of Sami Interest in Municipal Comprehensive Planning: A Comparison Between Norway and Sweden

Abstract

The Sami are recognized as an Indigenous people and a national minority in both Norway and Sweden, and their involvement in any planning concerning their traditional territories is required. The aim of this article is to examine how Sami interests are secured and institutionalized in municipal comprehensive planning (MCP). We use two case study areas: Sortland municipality in Norway and Vilhelmina municipality in Sweden. Analysis of various qualitative materials indicates that, despite contextual and institutional differences, the planning processes in the case study areas have similar outcomes. We conclude that formal rights of the Sami are not always acknowledged by the politicians who make the final decision. Rather, the Sami depend on the politicians' willingness to consider their needs.

Keywords

Indigenous people, Sami, reindeer herding, land use, sustainability, Sami Parliament, Sametinget, Norway, Sweden

Acknowledgments

This research was funded by the Norwegian Research Council as part of their research project EVAPLAN (Grant no. 237680/H20) and the Swedish Environmental Protection Agency as part of their research programme Storslagna fjäll (Magnificent Mountains). We are grateful to Camilla Thellbro who prepared Figures 2 and 3, and to our colleagues Anna Zachrisson and Johan Svensson, with whom we have worked closely on the project Green Planning: Vilhelmina as a Testbed for Innovative Land Use Planning in the Mountain Region. We would also like to thank two anonymous reviewers for initiated and constructive comments on an earlier version of the paper.

Creative Commons License



This work is licensed under a [Creative Commons Attribution-Noncommercial-No Derivative Works 4.0 License](https://creativecommons.org/licenses/by-nc-nd/4.0/).

The Institutionalisation of Sami Interest in Municipal Comprehensive Planning: A Comparison Between Norway and Sweden

Article 27 of the United Nations Declaration on the Rights of Indigenous Peoples (UNDRIP) requires the establishment and implementation of a participatory, open, and transparent process in relation to decisions concerning Indigenous Peoples' right to land and resources (UN, 2007). It also requires respect for the Indigenous Peoples' laws, traditions, customs, and social structures. According to UNDRIP, large-scale landscape projects affecting an Indigenous territory or resources (e.g., those seeking to extract minerals or generate energy) must be approved by the Indigenous people's representative institutions through open dialogue and in good faith with the respective state. Furthermore, Indigenous people have the right to develop priorities and strategies for their own territories, and projects that may adversely affect their environment, economy, culture, or religion should be avoided (UN, 2007). In light of this, Indigenous planning is emerging as a context and research field of its own (Bouvier & Walker, 2018; Hibbard, Lane, & Rasmussen, 2008; Jojola, 2008; Matunga, 2013; Prusak, Walker, & Innes, 2016; Walker, Natcher, & Jojola, 2013).

The Sami are an Indigenous people who practice reindeer herding across Sápmi, the traditional Sami homelands split by national borders of colonial expansion northwards in Finland, Norway, Sweden, and the Kola Peninsula in Russia. According to recent population estimates, there are 50,000 to 65,000 Sami in Norway, including 3,307 individuals recognized as reindeer herders (Landbruksdirektoratet, 2018). In Sweden, there are 20,000 to 40,000 Sami and approximately 2,500 reindeer herders (Samer, 2018). Both countries have a long history of marginalizing the Sami people through assimilation (Norway) and segregation (Sweden) of children in the majority language educational system, denying property rights, and restricting use of pasture for traditional reindeer husbandry. Thus, like other Indigenous Peoples, Sami people share experiences and histories of colonialism, which include the dispossession of their lands, marginalization, racism, and discrimination (Reimerson, 2015). The Sami's experiences of colonialization are rooted in geographical intrusion by nation states without their consent, against their resistance, and sometimes also by force. These nation states have subjected the Sami people to political control, cultural domination, economic exploitation, and undermining their own social, cultural, and economic structures (Kuokkanen, 2011). In this respect, the conflict over territorial rights to land are, at its core, that nation states want control over natural resources in Sápmi, while the Sami people have their livelihood and cultural survival at stake. Loss of identity and language has nevertheless awakened struggle and, in the late 1980s, the governments of Norway and Sweden passed laws recognizing the Sami as an Indigenous people, established national Sami Parliaments, and ratified conventions and voted in favor of UNDRIP to protect the rights of the Sami. A major difference between Norway and Sweden is that Norway has ratified the International Labour Organization (ILO) Indigenous and Tribal Peoples Convention (1989; referred to as ILO C169), while Sweden has not yet done so. The ratification of ILO C169 requires all branches of the national government in Norway to consult with representatives of relevant Sami interests, in addition to the Sami Parliament. As a result of these international commitments, both Norway and Sweden have overall responsibility for the survival of reindeer husbandry as an important part of Sami cultural heritage and land use practice. This requires the establishment and use of planning processes that properly include the Sami, for example, when decisions are made regarding natural and cohesive pastures and migration routes that are basic prerequisites for reindeer husbandry. However, competition between reindeer husbandry and other land use, such as forestry, mining, energy production, as well as tourism and recreational activities (hunting,

fishing, hiking, skiing, snowmobiling, etc.) has increased over time. These increases have contributed to the decline and fragmentation of reindeer pastures (Larsen, Raitio, Stinnerbom, & Wik-Karlsson, 2017; Riseth, 2005). Intact pastures are of the utmost importance for reindeer husbandry and are the background for Sweden's designation of areas of national interest.¹ They are also the intention behind strengthening and visualizing interests related to reindeer husbandry in planning as part of Norway's new Planning and Building Act² (PBA; Kommunal- og moderniserings departementet [KMD], 2008). However, Bongo (2012) observed in a Norwegian municipal planning case considered as a "best-practice" example:

Reindeer herders have participated, but there was little involvement in the plan. Several factors may explain lack of real influence, *inter alia* plan organization and communication challenges. Planning processes that involve the reindeer herders in an earlier phase, may provide better preconditions for their involvement. (p. 4)

This is crucial because, in Norway, the initial phase usually establishes a balance between interests among the stakeholders, which is formalized through pre-planning (i.e., plan program). Additionally, in Sweden, Näsman (2016) concluded, "Planning practices in the north of Sweden present a direct threat to indigenous cultural heritage and the livelihood of traditional practices such as reindeer herding" (p. 4).

These observations clearly indicate that obstructions (such as exclusion and ignorance) raised in the *contact zone* or *action arena* (i.e., the formal municipal comprehensive planning context) between Indigenous Peoples and majority societies may hinder Sami participation, thereby impairing the effectiveness of provisions intended to promote their interests (Barry & Porter, 2011). Thus, exploration of the sufficiency of formal recognition in the planning process, and whether Norway's recognition of ILO C169 leads to stronger formal Indigenous rights than those in Sweden, is warranted. Therefore, the aim of this study is to analyse the role of institutions in securing Sami interests in municipal comprehensive planning (MCP) in Norway and Sweden. We do this by comparing planning outcomes in two case study areas: the municipalities Sortland in Norway and Vilhelmina in Sweden. Using a diagnostic approach (Ostrom, 2007), we explore similarities and differences between the two areas and examine the influence of the institutional context on politicians prioritizing interests and making decisions that affect Sami interests during the MCP process.

Analytical Framework

The Institutional Analysis and Development (IAD) framework (Ostrom, Gardner, Walker, & Walker, 1994) was developed to facilitate the analysis of policy problems and provides a method to identify key elements that researchers need to consider when assessing the efficacy of a planning system. The framework is rooted in rational institutional theory and based on the assumption that actors or

¹ In Swedish municipal comprehensive plans, the development of areas of national interest have to be approved by the County Administrative Board (CAB) representing the state (Svensk Författningsamling [SFS], 2010:900). Within an area of national interest, land use can only be changed provided the value of national interest is not severely compromised. Thus, municipalities must handle issues related to the national interest through dialogue with the CAB, including in the case of reindeer husbandry.

² The Norwegian PBA requires that municipalities and regions secure natural foundations for Sami reindeer husbandry in their planning and involve the Sami interest at an early stage of the planning process.

individuals act in their own self-interest and are “utility maximizing” while collective action is governed by specific institutions. This applies, for example, to the participation of individuals and organizations in the management of natural resources (Ostrom, 2005). Institutional actors are viewed as “goal-oriented” and as needing to develop processes that promote predictability when there is uncertainty in order to facilitate decision-making. Institutions may, for example, set formal rules regarding property rights and laws, or may establish informal norms that permit or prohibit certain actions while stipulating sanctions for breaking such norms (Crawford & Ostrom, 1995).

The IAD framework has been widely applied in efforts to address diverse policy issues, including important questions related to the multiple use of forests, wildlife and fisheries management, and planning processes per se (Benson, Jordan, Cook, & Smith, 2013; Nigussie et al., 2018; Rudd, 2004). The IAD framework has also been widely employed in research aimed at studying local management of common resources, which often include Indigenous Peoples, whose particular policies and governance systems are based on the development of traditional ecological knowledge (see for example Ostrom, 1990; Smajgl, Leitch, & Lynam, 2009; Walsh, Dobson, & Douglas, 2013). It provides a valuable lens for examining multi-level action arenas where decision-making or, as in our case studies, planning processes occur and identifying the characteristics, behavioural patterns, and interactions of actors involved in the arenas, which ultimately determine outcomes (Ostrom, 2005).

The general elements of the IAD framework are illustrated in Figure 1. First, it is necessary to identify the focal action arena(s). In studies on land use planning, analyses of action arenas enable identification and characterisation of links between contextual variables (e.g., institutional arrangements, the biophysical environment, and socio-economic conditions) and outcomes (e.g., ecological, social, and/or economic). Our case studies focus on municipal-level action arenas, and specifically the process of developing MCPs within them.

Hence, at the core of the framework is the action arena, where actors, individuals, or representatives of organizations confront each other and shape plans and planning initiatives. The actions within the arena are constrained by overarching institutional arrangements at multiple levels. In the arenas considered here, these arrangements include the international-level commitments made by the Norwegian and Swedish governments, together with national- and regional-level regulations concerning implementation of the planning framework in the respective national contexts. These multiple level rules set not only the overarching rights and responsibilities for land use, but also the rules (or procedures) for policy development, decision-making, and eligibility for participation (Ostrom, 2011).

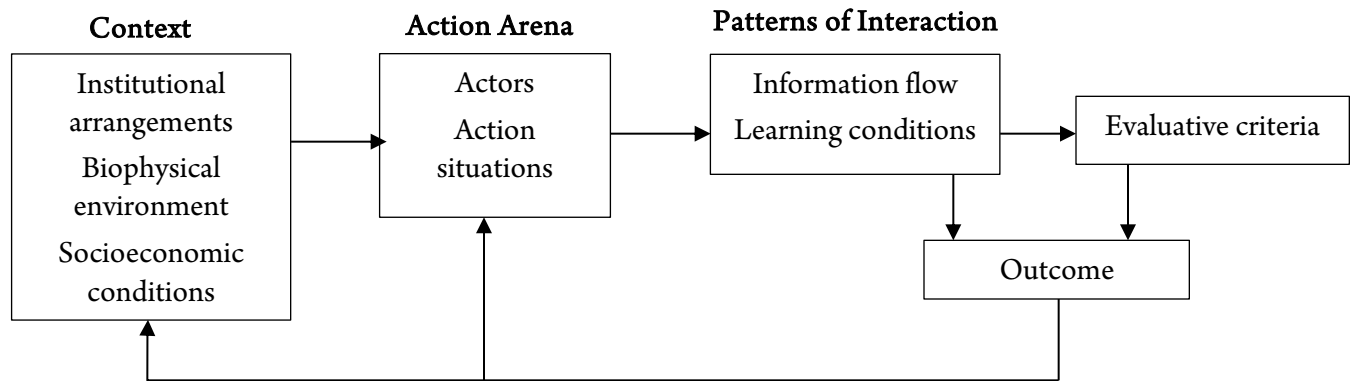


Figure 1. An Adapted Version of the IAD Framework (Ostrom, Gardner, Walker, & Walker, 1994)

Contextual variables that frame and constrain the action arena include those related to the biophysical and material world within which the actors interact. Here, we primarily refer to parts of Norway and Sweden within Sápmi, the Sami's traditional area of settlement. We focus on two municipalities (Sortland and Vilhelmina; for locations see Figure 2) that recently have adopted or are in the state of finalizing MCPs. For each municipality, we identify traditional and modern land use activities in relation to socioeconomic conditions. These contextual variables are assumed to set constraints for the actors' preferences and perceived incentives within the action arena, and consequently their consideration of the costs and benefits of various behaviours. Their patterns of interaction (in this case, framed by the planning process) lead to outcomes (the development of an MCP) that can be evaluated according to socially relevant criteria (e.g., effectiveness, efficiency, and equity). Outcomes feed back to the action arena at multiple levels, and may lead to change at the local, regional, or national level. While we focus mainly on the institutional context and its impact on the action situation, we also consider aspects related to the biophysical and socioeconomic contexts.

Material and Method

To compare how Sami interests are secured in the two case study areas, we use several types of qualitative empirical information drawn from official documents, strategy descriptions, focus groups, observations, and interviews. Data pertaining to Sortland are drawn from interviews with municipal planners, governors, and administrative staff of the Sami Parliament responsible for delivering outcomes of municipal planning processes. We also use written reports from the governors (Riseth & Nygaard, 2018), case documents and political resolutions from Sortland municipality, as well as relevant reports and comments in local media. Data pertaining to Vilhelmina are drawn from observations and written documentation from focus groups with representatives of Sami interests who worked on the vision and priorities for the municipality's new MCP. For a detailed description of the participatory planning process and role of the research team, see Bjärstig, Thellbro, Zachrisson, and Svensson (2018a). These data were complemented by political referrals and statements (see Appendix for a detailed summary of the empirical material). Vilhelmina does not represent a typical municipality because it is included in a project (and is being used as a test site) to develop a more participatory MCP process. Thus, stakeholder

involvement has already been implemented during the visionary stage of the planning process in Vilhelmina (i.e., not only in the mandatory consultation and exhibition stages, as described in Figure 3).



Figure 2. Map Displaying the Sápmi Area (in dark grey shading). The case municipalities Sortland and Vilhelmina are marked with white dots, while black dots indicate locations of the capitals of the four countries within which Sápmi is located.

The Case Study Areas: Biophysical Environment and Socioeconomic Conditions

Sortland municipality covers an area of 722 km² (including 24 km² of water bodies), has approximately 10,000 inhabitants (half residing in the main town, also called Sortland), and is the regional trading and administrative centre of Vesterålen (population 30,000). The Sami are a minority; only 68 of Sortland's inhabitants were registered in the electoral roll for the Sami Parliament in 2017, and the municipality is not part of the administrative area for the Sami language. The municipality is located on the islands of Langøya and Hinnøya, united by a bridge across Sortlandsundet (Sortland sound). The Kanstadfjord and Vestre Hinnøy reindeer herding district (RHD—a term commonly used to refer both to a strictly delimited geographical area and the communities or associations of people with reindeer herding rights in that area) is one of two RHDs on Hinnøya, and the only one in Sortland municipality. The RHD has only four Sami family business units, but operates advanced mixed businesses including a slaughterhouse, two tourism ventures, food outlets, local culture-based activities, and home fisheries. One family living in Sortland runs the largest tourism venture in the municipality (Riseth, 2016). The reindeer herders' need for pasture conflicts with other land uses including farming, tourism, leisure activities, and construction.

Vilhelmina municipality covers an area of 8,740 km² (including 670 km² of water bodies) and has a population of approximately 6,700 (about half residing in or within a few kilometres of Vilhelmina city

centre). The Sami area minority in the municipality; only 260 inhabitants were registered in the Sami Parliament's electoral roll in 2017. The municipality has a long history of various types of traditional and modern land uses, including fishing, hunting, reindeer herding, and latterly aquaculture, forestry, mining (during the 1970s and 80s), and energy production (through hydroelectric power plants and wind farms). Hence, there is a strong dependency on the economic use of natural resources (Theilbro, 2017). About 16% of the municipality's land area is formally protected, mainly in the form of nature reserves in the mountain area, whilst approximately 60% of the land area has designations indicating nationally recognized interests. Recreation and tourism activities are conducted throughout the municipality. In the municipality, there are two RHDs (Vilhelmina North & Vilhelmina South), with 43 reindeer herding family business units (Sandström, Sandström, Svensson, Jougda, & Baer, 2012). Vilhelmina is also 1 of 25 Sami administrative municipalities established in accordance with the Act on National Minorities and Minority Languages (Svensk Författningsamling [SFS], 2009:724³), which aims to promote Sami culture and enhance protection of Sami interests (Kuoljok, 2016; Sametinget, 2016). Specific requirements are imposed on a municipality that is a Sami administrative municipality; that is, Sami have the right to pre-school activities and elderly care entirely or to a substantial extent in their own language. Also, Sami have the right to use their language during contact with the municipality and authorities in the area. The municipalities concerned receive state subsidies for the additional costs this might incur.

Institutional Arrangements Framing the Action Arena

In both countries, municipalities are the local authorities responsible for spatial planning, based on an MCP (KMD, 2008; SFS, 2010:900). However, land-use components of an MCP are legally binding in Norway, which means that deviation from the MCP requires a new full planning process. This is not the case in Sweden where the plan gives guidance for more detailed planning, which in turn is legally binding.

While comparing MCP processes in the two municipalities (Figure 3), we noted a stronger focus on pre-planning in Norway. Here, a municipal government is required, within the first year following its election, to develop and agree on a planning strategy for its four-year term (Step 0). The next steps (1-3) involve development of a planning strategy programme. During these phases, a decision is made regarding the need for an Environmental Impact Assessment (EIA), which is required when a plan exceeds a defined size or is considered likely to substantially affect the environment and society. These pre-planning steps are intended to clarify and visualize the governments' plans and promote both predictability and involvement (Holth & Winge, 2017). For reindeer husbandry, this means that RHDs should be notified and provided with opportunities to participate in the plan's initial development and all subsequent phases of the planning process.

In Sweden, a municipal government is required to adopt or develop policies regarding the strategic development of land and water use within its boundaries once during each four-year electoral cycle and compile policy statements in an MCP. It must adopt the current plan or develop a replacement if the original is not considered fit for its purpose. If necessary, the proposal is adjusted based on opinions received during a consultation phase and the final plan proposal is exhibited. Stakeholder involvement (e.g., RHDs amongst other actors) is only mandatory in the later steps (3 and 5 in Figure 3) and is not

³ In Sweden and Norway, laws and their amendments are identified using a year:serial number format.

required during the early steps when the plan is conceptualised. If no major changes are made after the exhibition (which would necessitate an additional exhibition), the plan is adopted with a statement from the County Administrative Board (CAB) regarding the consideration of national interests.

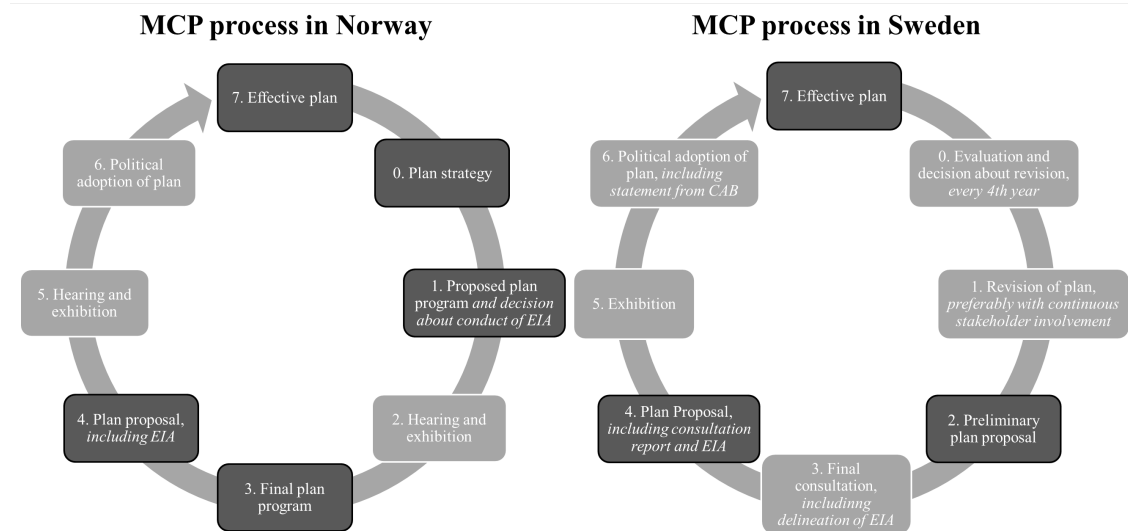


Figure 3. Simplified schematic diagrams of the MCP processes (light grey) and outcomes (dark grey) in Norway and Sweden. The main difference between the processes in the two countries are the initial preplanning steps in Norway, which open for stakeholder participation both through the development of a plan program (Step 1) and a public hearing (Step 2). Sweden lacks these steps.

Regional and National Government Tools for Securing Sami Interests

In Norway and Sweden, both the regional and national governments have core responsibilities for protecting Sami interests and reindeer husbandry land-use. However, the systems in the two countries differ considerably. The responsibility is exercised by the County Governor (CG) and CAB in Norway and Sweden, respectively, and key tools (described below) for protecting the interests are *objection* in Norway, and designation of geographical *areas of national interest* in Sweden. The Sami Parliament also has a differing role in planning processes (due to differences in its legal status) in Norway and Sweden.

Norway: Reindeer Husbandry Provisions in the PBA

The Norwegian PBA is intended to “ensure the natural basis for Sami culture, businesses, and community life” (KMD, 2008, §3-1c). This is reinforced by Part 4 of the same paragraph, which states that “plans shall contribute to the implementation of international conventions and agreements within the scope of the Act.”

Since it was passed in 1985, the PBA has evolved in several ways. In 1997, an official governmental report by the Sami Rights Committee, *Natural Foundation for Sami Culture* (Norges offentlige utredninger [NOU], 1997:4), identified a need for explicit protection of Sami land use interests. Later, the Reindeer Husbandry Act Committee (NOU, 2001:35) agreed and recommended, inter alia to the

Planning Act Committee (NOU, 2003:14), that reindeer husbandry interests should be considered earlier in the planning process and resources should be committed to safeguard these interests in the planning work.

Following a review, the Planning Act Committee proposed that the Sami Parliament should have a right to object to decisions made during the municipal planning process, and that rules related to reindeer husbandry should be included in the municipal planning process. Both international conventions and the country's constitution justified these proposals according to the committee. The Ministry's Legislative Declaration (MD, 2009) explicitly states that there is "reason to give particular emphasis to the protection of the natural basis of Sami culture, business practice and community life" (§ 3.1.c). The Declaration also states that overall effects of plans and measures that may affect reindeer herding must be evaluated in each RHD potentially affected.

Municipalities' authority to make binding planning decisions are limited by provisions for raising objections, which may be submitted by a relevant state or regional authority to ensure that national or significant regional interests are adequately safeguarded (KMD, 2014). These authorities include the Sámi Parliament and the CGs for regions in mid- and northern Norway. If an issue raised in an objection cannot be resolved by mediation, the final decision is made by the Ministry of Local Government and Modernization.

A reorganization of public reindeer husbandry management, completed in 2014, resulted in closure of a central agency based in the Ministry of Food and Agriculture. Consequently, regional reindeer husbandry offices were integrated into CG offices, and Regional Boards with majority herder representation were discontinued. However, the Regional Boards' closure was contested, primarily because they had the authority to voice an objection on behalf of reindeer husbandry interests. There was also a fear that the CG would raise the threshold for consideration of an objection, but this was not supported by a subsequent analysis of the frequency of objections considered by CGs (Riseth & Nygaard, 2018). Hence, so far it seems like the consequences of this change are less than many feared.

Sweden: The CAB and National Interests

The concept of *national interests* arose in Sweden in the early 1970s as a means for the state to influence and monitor nationally valuable natural resources through spatial planning (Svensk Författningssamling [SOU], 1971:75, 2015:99). Today, regulations regarding national interests can be found in the Environmental Code (SFS, 1998:808). Areas that are considered to contain valuable natural resources for industrial use (mineral deposits, wind power, communication, waste management, etc.) or conservation (natural, cultural, or recreational features, etc.) may be designated as being of national interest by the national government via appropriate agencies. The geographical borders and value of such areas can be defined, and guidelines formulated for safeguarding natural resources of national interest, while simultaneously considering nationally important economic sectors (particularly forestry, but also agriculture) through dialogue between MCP and relevant CABs (SFS, 2010:900).

Reindeer husbandry is regarded as a national interest, signifying that the State has primary responsibility for it, and can intervene if a municipality does not take account of reindeer husbandry interests in its planning. In the Natural Resources Act (SFS, 1987:12), the most important areas for reindeer husbandry (e.g., gathering places, migratory routes, overnight pastures, difficult passages, and special

pastures, corrals, or pens) are also designated as national interests. Such areas may be classified as strategic locations, functional infrastructure, or consecutive pastures.

The PBA (SFS, 2010:900) requires municipalities to consult with *all* affected interests throughout the planning process, following stringent rules for public scrutiny. Further, Chapter 6 §4 of the Environmental Code (SFS, 1998:808) requires consultation with all affected interests in activities that will impact the environment, and special permission from relevant CABs for activities with major impact. Since 1971, CABs located in the mountain region have been obliged to decide the number of reindeer allowed in each of the 51 RHDs, and then monitor the numbers. They must also oversee implementation of reindeer management interests in land use planning. All CABs in the region must have a Delegation for Reindeer Management comprising six members (three politicians representing public interests and three representing reindeer husbandry interests) and a chairperson (the CG). Since 2007, some of the responsibilities of the delegations have been transferred to the Sami Parliament.

The Sami Parliament—Sametinget (in Both Norway and Sweden)

In Norway, the Sami Parliament is responsible for ensuring that Sami interests are assessed holistically. While the CG can only submit an objection when reindeer husbandry interests are not appropriately considered, the Sami Parliament may oppose plans of significant importance to Sami culture, business practice, and community life. However, consideration of reindeer husbandry is normally the main reason for the Sami Parliament raising an objection. Ten years after inclusion of the Sami Provision in the PBA (KMD, 2008, § 3-1), the Sami Parliament still submits objections to municipal plans. The apparent need for this has been attributed to a general lack of willingness to safeguard Sami interests during planning processes (Riseth & Nygaard, 2018), possibly due to a lack of knowledge regarding the Sami presence and business practices and/or competing interests attracting stronger support.

The Swedish Sami Parliament has special responsibilities under the Sami Parliamentary Act to participate in land-use planning and ensure that Sami needs are considered, including needs related to reindeer husbandry, and land and water utilization (SFS, 1992:1433). The Sami Parliament is both a state authority and an elected parliament with responsibility to improve opportunities for Swedish Sami. As an Indigenous people, there is a requirement for the parliament to both preserve and develop their culture. Every year, the Sami Parliament responds to numerous referrals relating to reindeer husbandry. As the person responsible for planning in the Sami Parliament explained, “The Sami Parliament is involved in the planning process through the CAB, often through the opportunity to comment on MCPs; however, our requirements are not taken into consideration” (Interview, 2018). It should be noted that, unlike its Norwegian counterpart, the Swedish Sami Parliament does not have the authority to voice an objection. Accordingly, the Norwegian Sami Parliament operates with broader space for political agency than its Swedish equivalent, and Sami customary rights are stronger in Norway than in Sweden (Josefsen, Mörkenstam, & Saglie, 2015).

Results: Action Arenas and Interaction

Sortland Municipality

The process of establishing an MCP in Sortland illustrates several issues relevant to reindeer herding conducted outside Sami majority areas and within a municipality beyond the administrative Sami

language area. In Sortland, there are relatively short distances between seasonal pastures of the Kanstadfjord and Vestre Hinnøy RHD. The most important winter and spring pastures on Hinnøya are located in a densely populated area, which creates considerable potential for conflicts, particularly in relation to the planning and establishment of new industrial, leisure, and housing developments.

The municipal government decided in 2012 to start the process of working out a plan for the city areas of Sortland, and in 2014 to work on a new MCP (Sortland Kommune, 2017). Municipal planners defined the Sami interests solely in relation to reindeer herding, which (as already noted) is essentially performed by a single family within Sortland's municipal borders. The planners opted to involve the RHD in early stages to learn about challenges associated with migration routes and pastures, resulting in a request for an EIA on reindeer herding. The Sami Parliament raised an objection to the first draft of the plan for the city areas as it lacked measures and an assessment of consequences for the RHD. The municipal planners opted to resolve this through dialogue with the Sami Parliament and RHD, which resulted in the development of an agreement with the RHD and changes in the plan. The MCP process also evolved in parallel with the planning of a new main road (European Route E10), which led to a reindeer herding EIA being commissioned to consider effects of both the new road and other developments within the borders of Sortland and neighbouring municipalities (Kristensen, 2016).

Efforts to address these challenges by Sortland municipality's planners (Sortland Kommune, 2015, 2017) led to the RHD being granted access to important pastures. After this revision of the plan proposal, the Governor stated to Sortland municipality:

The Governor thinks the proposition of the MCP has largely realized its strategy to construct a plan with a clear profile for safeguarding reindeer herders' interests. Reindeer herding is well integrated in the plan and the municipality has safeguarded the business in a good way. (Solberg, 2016, p. 2)

Nevertheless, the Sami Parliament and the Governor also raised an objection to the second version of the MCP, seeking closure of a sandpit at Kringelen from January to April (when the reindeer are most vulnerable before calving), but withdrew following acceptance of the demand (Sametinget, 2017). At the time of writing, Sortland municipal government is being run by a left-wing coalition with a majority of only one delegate. The leader of the RHD affected by the municipal plans is one of the Labour delegates, and a delegate to the Sami Parliament.

In the autumn of 2017, Chief Officer (called a Rådmann in Norwegian) circulated a revised version of the MCP. This resulted in several letters being sent to the local paper opposing the "reindeer herding friendly plan." One stated:

The Chief Officer's proposition only focuses on and supports reindeer herding. One active herder cannot stop all development plans on Hinnøya . . . It is up to the municipal government to handle the proposition. Let's hope the government will stand up and vote down the attempts to change Hinnøya into a reindeer reserve. (Enoksen, 2017, pp. 1-2)

The author of this letter was a delegate from the Socialist Party who suggested an alternative approach in November 2017, after a motion to remove all the measures and changes in favour of the RHD. The delegate then garnered sufficient support from the opposition for almost 100 proposed amendments to the municipality's proposed resolution, including withdrawal of previously agreed conditions regarding

the Kringelen sandpit requested by the Sami Parliament and the Governor. Further, some members of the municipal government questioned the Sami Parliament's right to raise an objection to the plan on the basis that this was the sole responsibility of the Governor. Objectors stated, "The Sami Parliament is not a legal institution to raise objections concerning reindeer herding. Only the Governor can raise an objection when future reindeer herding is at stake" (Sortland Kommune, 2018, p. 4).

The administration replied, "The general view of the administration is that the municipality must be careful not to question the competence of the sectoral authorities. The administration is not entitled to undermine the elected, state or regional authorities' competence to object" (Sortland Kommune, 2018 p. 7), based on advice in letters circulated from the Ministry and comments on the PBA regarding law proposals (Odelstingsproposisjon [Ot. prp.], 2007-2008).

This development caused the Sami Parliament and Governor of Nordland to raise new objections as they could not accept the numerous substantial changes in the plan without a new hearing. In an attempted response to avoid a stalemate, the Governor suggested removal of plans affecting the disputed sandpit area from the MCP, with the intention to develop a separate zoning plan for this area. The municipal government did not support this suggestion and proposed a dispensation from the plan with regards to the sandpit area. This provoked a new dispute with the Sami Parliament, and the need to involve two governors (called Settefylkesmann) from neighbouring regions, who were also unwilling to accept the dispensation. In April 2018, the municipal government changed its strategy, moving back to the MCP, and decided to form a negotiating committee to initiate mediation with the Governor. Agreements were reached for most of the MCP, but in 2019 the case of the sandpit area was submitted to the Ministry of Local Government and Modernisation for a decision. The lengthy process observed in this case is somewhat unusual, but similar outcomes might occur in most municipalities in the Norwegian part of Sápmi.

Vilhelmina Municipality

Vilhelmina municipality had an outdated MCP that was established in 2000. The only concrete action and prioritisation of Sami interests it included was a proposed bridge to ease reindeers' migration and passage over a large stream (Vojmán). Eighteen years later, the bridge has still not been constructed. Nevertheless, the words "Sami" and "reindeer herding" were more frequently mentioned in the Vilhelmina MCP than in some old and outdated MCPs of other Sami administrative municipalities, although less frequently than in MCPs adopted by municipalities after January 1, 2010, when the Act on National Minorities and Minority Languages came into force (Ahlfeldt, 2017). There is recognized importance of reflecting Vilhelmina's status as a Sami administrative municipality in the new MCP, and hence engaging representatives of Sami interests (RHDs and other Sami associations) as a specific stakeholder group in early stages of the participatory planning process. Thus, a focus group was formed from these representatives to discuss visions and priorities for development in the municipality. This group had acknowledged importance (in addition to others in the region) and significantly influenced the content of the draft MCP (Björsting, Zachrisson, Svensson, & Thellbro, 2018b).

The political parties in Vilhelmina were then given the opportunity to comment on the draft before a final version was compiled and sent out for formal consultation according to the law. Comments by members of the Social Democratic Party, which has a majority in the Vilhelmina municipality

government, directed the consultation document's wording. They required several amendments regarding statements on Sami interests and reindeer herding before sanctioning it for formal consultation. They stated, "Reindeer husbandry and Sami culture have received such extensive references and prioritization over other business that [the plan] will neither promote reindeer husbandry, nor other important interests or activities of the municipality's inhabitants" (Social Democratic Party, 2017, p. 1). Compared to those of other political parties (e.g., the local party Political Alternative), the Social Democratic Party's comments regarding the Sami interests were quite harsh. They even proposed that some content should be entirely removed. However, in several cases, the Social Democratic Party chose to retain the content but amended the phrasing by replacing words such as "must" with "should," and reformulating the text so that its intention was vague. In addition, in some cases the content was retained, but clauses were added to show that financial and other responsibilities were national or international obligations rather than responsibilities of the municipality.

When it came to the national interest of minerals in a certain geographic area, the Social Democratic Party had a view that was the total opposite of the Sami focus group (and all other focus groups). The participants in the focus groups did not see how that national interest could coexist with other national interests such as reindeer herding and recreation in the area, while the Social Democrat Party stated that the national interests indeed could coexist and emphasised its importance for business development.

Nevertheless, despite the adjustments made by the Social Democratic Party, the draft MCP that was sent out for formal consultation had substantially more content focusing on priorities for Sami interests and reindeer herding than the previous MCP. This is illustrated by the statement:

The reindeer husbandry's claim should be considered in relation to other interests in the mountain landscape. When expanding infrastructure such as trails, roads, wind turbines and pipelines and/or development of activities such as snowmobiling, hunting, fishing and mountain tourism, the needs of reindeer husbandry should always be considered. (Draft MCP, 2018, p. 49)

Responses by the municipal administration during the consultation highlight the stronger focus on, and prioritization of, Sami interests in the MCP, as exemplified by statements by the CAB in Västerbotten (who safeguard national interests), the Sami Parliament, and the RHDs in Vilhelmina. None of these actors offered any profound criticism of the safeguarding and promotion of Sami interests in the MCP document, but all wanted some clarification, adjustments, and explanation of motivations.

The Sami Parliament broadly welcomed the municipality's presentation of reindeer husbandry as a national interest and acknowledged the complexity of its conditions and requirements. The CAB proposed alterations to the text, particularly parts of the initial draft changed by politicians. The CAB also proposed amendments to statements regarding the national interest in minerals, suggesting that "previous coexistence of mining, tourism and reindeer herding interests in Stekenjokk has not been trouble-free. The municipality should set priorities for the overlapping national interests" (CAB, 2018, p. 4). The CAB also stated that Sami culture and reindeer husbandry are crucial for achieving the environmental objective called a "great mountain environment." In addition, the CAB said that the plan's impact on reindeer husbandry should be more clearly stated in the impact assessment, which should mention (inter alia) that an upgrading of the airstrip could block a reindeer migration route (CAB, 2018). Vilhelmina North and South RHDs requested some clarifications and adjustments

regarding the national interest in minerals and both climate effects and adaptation. These comments were similar to those of the CABs. For example:

The Sami RHDs oppose the municipality's view that national interest in minerals can be co-promoted with the national interest in reindeer herding in Stekenjokk given earlier coexistence problems. An impact assessment of past exploitation on reindeer herding is missing. Furthermore, the conditions have changed since the Stihken mine was in operation, and climate change and cumulative effects of intrusion on pastures make the year-round lands of Stihken increasingly important. (Vilhelmina North & South RHDs, 2018, pp. 3-4)

Vilhelmina municipality accounted for most of these requests, and a new MCP was adopted by the end of 2018.

Discussion

Our case studies illustrate that Sami interests may be safeguarded in municipal-level planning processes in Norway and Sweden. In Sortland, municipal planners documented and assessed the needs of RHDs through an EIA and participatory action. In Vilhelmina, an innovative participatory planning method provided opportunities for two RHDs and Sami entities to deliver input *before* a draft MCP was compiled (rather than simply react to an already developed plan). However, as both case studies also show, municipal governments that formally adopt an MCP can also make changes to the plans in accordance with political interests of the parties in power. In both Sortland and Vilhelmina, other economic interests (such as tourism, mineral deposits, etc.) were undoubtedly promoted at the expense of Sami interests. Reindeer herding is often seen by politicians as merely an industry among others, without the recognition to Sami rights and cultural survival.

Nevertheless, in Norway, the institutional arrangements at both regional and national levels made it possible to override the local opposition to interests that benefit Sami. However, the lack of willingness in Sortland to accept objections from the Sami Parliament and the Governor's final legally binding words may postpone the planning process for years and jeopardize the Sami interests in planning practices during this time. Moreover, Sortland is not the only municipality struggling to implement the clause of the PBA intended to "ensure the natural basis for Sami culture, businesses and community life" in its MCP (Riseth & Nygaard, 2018, p. 313). There are also other documented examples of good governance of Sami interests in the planning process being set aside by municipal governments in favour of other interests (Riseth & Nygaard, 2018).

In Sweden, the CAB and Sami Parliament have much weaker roles during the planning process. However, both institutions have been able to submit informative comments on MCPs regarding reindeer husbandry and other national interests to the municipality during consultation. The final version of Vilhelmina's new MCP was adopted in the end of 2018, and Sami interests are much more strongly promoted in the new MCP than in the previous MCP.

Our diagnostic analysis (Figure 4) indicates at least four factors may contribute to the similarity in planning process outcomes in the two municipalities. Firstly, there are overarching similarities; both municipalities are situated in Sápmi and they are strongly dependent on natural resources, although they differ in size. Sortland is a rather small municipality where potential areas for development are concentrated along a fiord, while Vilhelmina is larger but clearly dependent on natural resources through

aquaculture, forestry, and tourism. Secondly, both municipalities are centres for significant socioeconomic drivers: Vilhelmina is a secondary school centre and Sortland is a regional trade centre. Thirdly, the Sami are a minority population in both municipalities; consequently, reindeer husbandry has suffered as a result of competition from other land uses, which has contributed to the decline and fragmentation of reindeer pastures. Finally, local politicians in both case study areas have highlighted the minority position of the Sami to justify failure to prioritize reindeer husbandry in relation to other economic sectors. Thus, the politicians are not only making trade-offs between competing interests (which is a major element of the inherent nature and point of politics), but also denying the Sami's specific rights to land and water as an Indigenous people that are enshrined in legislation and international obligations. We could additionally ask, what is at stake in cases like these? For the Sami, it is all about the sustenance of a culturally based livelihood that lives under the threat of marginalization (Riseth, Tømmervik, & Forbes, 2018). For the governments, it seems that the main goal is to avoid unpleasant political resistance and continue "business as usual."

In summary, Sami rights have stronger formal protection in Norway (provided by ratification of the ILO C169 and the formal right to objection by the CG and Sami Parliament) than in Sweden. However, in both countries, interests of the Sami minority often lose out to those of stronger actors (Inga, 2014; Skum, 2017). There are several possible reasons for this. Firstly, international instruments such as UNDRIP are weak and not fully implemented in Norway or Sweden. In Norway, where ILO C169 has been ratified, it is only used in exceptional cases (Riseth & Tømmervik, 2017). In order to secure their rights and, for example, stop extractive industry projects, Indigenous Peoples are thus forced to resort to extra-parliamentary methods, the formation of alliances with other interest groups, and lobbying decision-makers at national and international levels, which was shown in the case of Kalvatnan windfarm (Det Kongelige Olje- og Energidepartementet, 2016). Secondly, the planning process per se and the actors involved in the process affect outcomes. Previous research has shown that promoting participation in planning (for example through engaging RHDs early in the planning processes) could synergistically increase collaborative learning during the MCP process. Such inclusive governance can support local values, improve awareness of traditional knowledge, build trust and ownership of plans, strengthen enforcement of rules, and address inequitable power relations, thereby improving local implementation capacity, enhancing monitoring and sanctioning efforts, and supporting long-term sustainability of MCPs (Bjärstig et al., 2018b; Nigussie et al., 2018). In Norway, the additional initial step in the planning process (involving all relevant interests from the start) clearly contributed to the consideration of Sami interests, especially in conjunction with the EIA approach that was also adopted. In Sweden, Sami participation was also included through a focus group during the early phase of the planning process. However, this was not mandatory (stakeholder involvement is only obligatory during consultation and exhibition phases of MCP). We conclude that there is strong potential for Sami interests to be appropriately integrated when they are included in early stages of the MCP process. In Norway in particular, and to some extent in Sweden, Sami representation (in the form of the Sami Parliament and the CG or CAB) acts as an important monitor and contributor to the planning process because of its formal role. This highlighting of the needs of reindeer husbandry actors also promotes more general inclusion of Sami interests. However, these actions are often primarily "correctives" of local processes and may only postpone decisions, as the final outcomes are determined by political interactions.

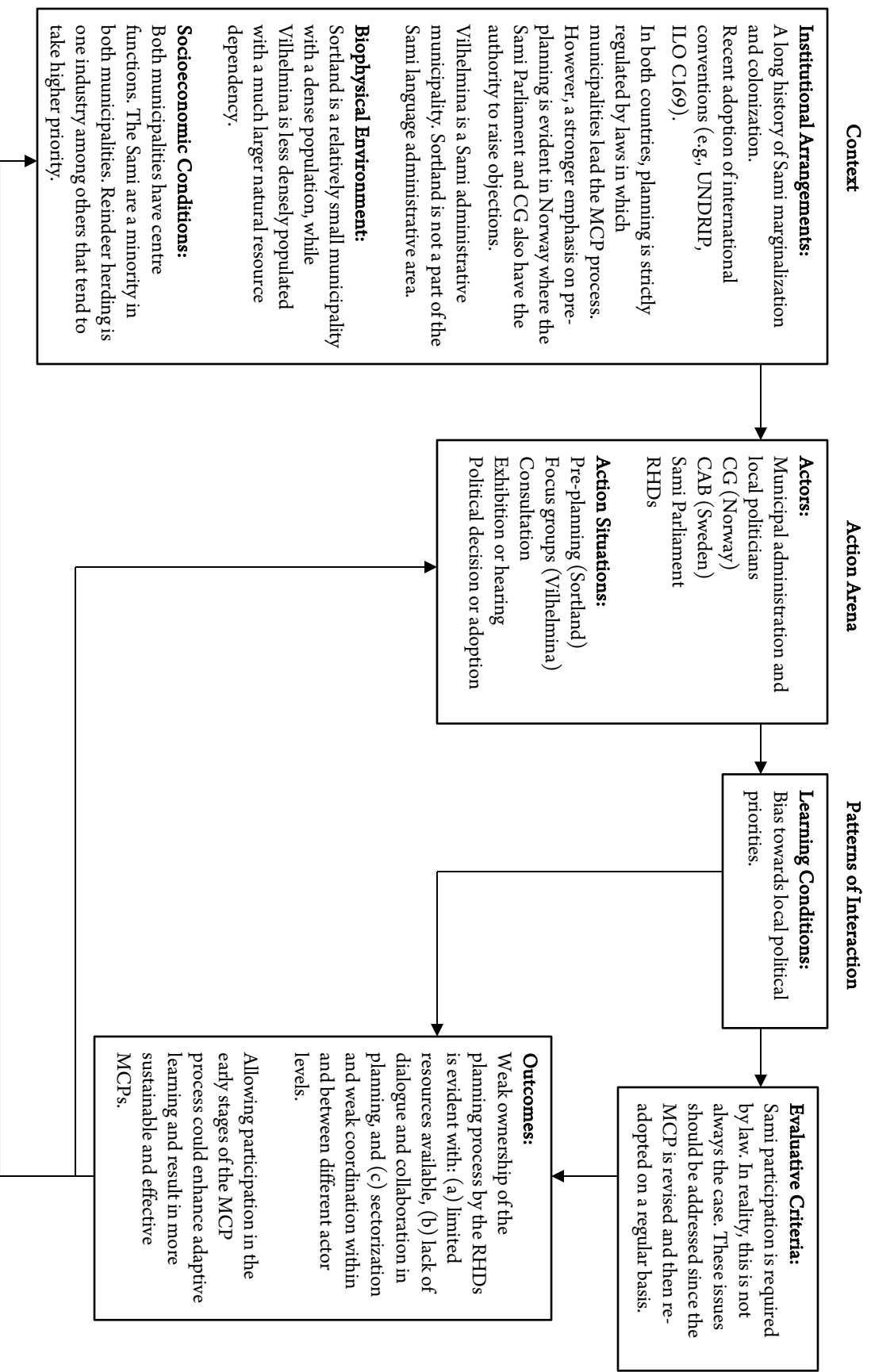


Figure 4. Adapted IAD Framework for Securing Sami Interest in MCPs in Norway and Sweden.

Policy Recommendations and Concluding Remarks

Our analysis of institutional design, implementation, and perception of the MCP process has provided insights into both assumed and actual outcomes, and a platform to understand patterns of interactions among MCP activities and actors. MCP processes are explicitly intended to engage Sami participation and overtly consider Sami interests, but there is little convincing evidence that they do in practice. This can be seen as a problem of equity; colonization and historical marginalization of the Sami interest can explain some of the problems of integrating current Sami needs in the planning process in this study as well as in Indigenous planning internationally (Bouvier & Walker, 2018; Porter & Barry, 2014; Prusak et al., 2016). Other shortcomings arise from the priorities of both planning institutions and political priorities at the local level. A recommendation following these findings is that Sami interests could be more integrated in planning by strengthening the RHDs' planning and administrative capacity, inviting the RHDs to participate at the outset of the MCP process, and by providing guidance material. In a similar way, the municipal competence and awareness of Indigenous rights could be strengthened, and more advanced inter-municipal and regional planning processes could be developed. However, as long as the formal rights of the Sami are not acknowledged by the politicians with final decision-making power, the Sami will, despite the recommended improvements above, be dependent on those politicians' willingness to take their needs into consideration. This indicates an important limitation with the planning systems. Porter and Barry (2014) conceptualize this as *bounded recognition*, "where a dominant power takes an emergent discourse or practice and recontextualizes it to construct and reinforce preestablished power relations" (Porter & Barry, 2014, p. 16). This can be seen as a form of co-optation where planning power includes the ability to not hear what is being said. The conclusion to this is that since planning processes have limitations, Indigenous interests, in many cases, as demonstrated in the above mentioned Kalvatnan case, need to use the political means they have at hand to trump competing interests. Hence, this article adds to the growing field of Indigenous planning in several ways. First, it adds a rural planning perspective as a complement to primarily Indigenous urban planning studies. Second, our article focuses on the High North and the Sami people (one of the few officially recognized Indigenous people in Europe), and thereby broadens ongoing planning research on Indigenous rights and sovereignty in settler colonial states such as in Australia and Canada to also include the Nordic states. Third, we highlight the effects and limitations rendered by the way the contact zones (in this case the MCP processes) are structured, produced, and performed, and the implications this has on the possibility to negotiate and renegotiate the terms on which the planning system will accommodate Indigenous interests (Barry & Porter, 2011).

References

- Ahlfeldt, L. (2017). *Rennäringens intressen inom det samiska förvaltningsområdet: En komparativ fallstudie mellan de samiska förvaltningskommunerna* [Reindeer interests in the Sami administration area: A comparative case study between the Sami administrative municipalities; Unpublished master's thesis]. Umeå University.

- Barry, J., & Porter, L. (2011). Indigenous recognition in state-based planning systems: Understanding textual mediation in the contact zone. *Planning Theory*, 11(2), 170-187. <https://doi.org/10.1177/1473095211427285>
- Benson, D., Jordan, A., Cook, H., & Smith, L. (2013). Collaborative environmental governance: Are watershed partnerships swimming or are they sinking? *Land Use Policy*, 30, 748–757. <https://doi.org/10.1016/j.landusepol.2012.05.016>
- Bjärstig, T., Thellbro, C., Zachrisson, A., & Svensson, J. (2018a). Implementing collaborative planning in the Swedish mountains: The case of Vilhelmina. *WIT Transactions on Ecology and the Environment*, 217, 781-795. <https://doi.org/10.2495/sdp180661>
- Bjärstig, T., Zachrisson, A., Svensson, J., & Thellbro, C. (2018b). *Grön översiktsplanering i fjäll- och fjällnära landskap. Deltagande planering för en hållbar och innovativ översiktsplan för Vilhelmina kommun* [Green overview planning in mountain and mountainous landscapes. Participatory planning for a sustainable and innovative overview plan for Vilhelmina municipality] (Naturvårdsverkets rapportserie, nr 6811). <https://www.naturvardsverket.se/Documents/publikationer6400/978-91-620-6811-0.pdf?pid=21967>
- Bongo, M. A. J. (2012). *Reindriftas medverknin g i en kommuneplanprosess. En casestudie av planlegging i Alta kommune* [Reindeer herders' involvement in a municipal planning process. A case study of planning in Alta municipality; Master's thesis]. Høgskulen i Volda. <https://core.ac.uk/download/pdf/52066359.pdf>
- Bouvier, N., & Walker, R. (2018). Indigenous planning and municipal governance: Lessons from the transformative frontier. *Canadian Public Administration*, 61(1), 130-135. <https://doi.org/10.1111/capa.12249>
- County Administrative Board (CAB). (2018). Länsstyrelsens samrådsyttrande på Vilhelmina kommuns förslag till översiktsplan, 2018-03-28 [The County Administrative Board's consultation opinion on Vilhelmina municipality's proposal for an overview plan; Unpublished report].
- Crawford, S. E., & Ostrom, E. (1995). A grammar of institutions. *American Political Science Review*, 89(3), 582-600. <https://doi.org/10.2307/2082975>
- Det Kongelige Olje- og Energidepartementet. (2016). *Fred Olsen Renewables AS-Kalvvatnan vindkraftverk i Bindal og Namsskogan kommuner—klagesak* [Fred Olsen Renewables AS-Kalvvatnan wind turbine in Bindal and Namsskogan municipalities—complaint case] (Ref. 08/3602- Brev av 11.11.2016). <https://www.regjeringen.no/contentassets/2cb371d9a0204b19a8a914ae830a62ee/vedtak-kalvvatnan.pdf>
- Draft MCP. (2018). *Vilhelmina kommun med sikte på 2030. Samrådshandling, 2018-02-06* [Vilhelmina municipality with a view to 2030. Consultation action, 2018-02-06; Unpublished report].

- Enoksen, O. (2017, October 19). Ingen grenser for reindrifta [No limits on reindeer husbandry; Letter to the editor]? *Bladet Vesterålen*. <http://www.blv.no/meninger/leserinnlegg/ingen-grenser-for-reindrifta-1.2177914>
- Hibbard, M., Lane, M. B., & Rasmussen, K. (2008). The split personality of planning: Indigenous Peoples and planning for land and resource management. *Journal of Planning Literature*, 23(2), 136-151. <https://doi.org/10.1177/0885412208322922>
- Holth, F., & Winge, N. K. (2017). *Plan—og bygningsrett: Kort forklart* [Planning and building law: Briefly explained]. Universitetsforlaget.
- Inga, K. M. (2014). *Hvor går vegen videre? En studie av Kanstadsfjord/ Vestre Hinnøy reinbeitedistriktets møte med vegutbyggingene Lofast og Panoramavegen* [Where does the road go? A study of Kanstadsfjord/ Vestre Hinnøy reindeer grazing district meeting with road developments Lofast and Panoramavegen; Master's thesis]. UiT, Tromsø.
- International Labour Organization (ILO) Indigenous and Tribal Peoples Convention, 1989 (No. 169). https://www.ilo.org/dyn/normlex/en/f?p=NORMLEXPUB:12100:0::NO::P12100_ILO_CODE:C169
- Jojola, T. (2008). Indigenous planning—An emerging context. *Canadian Journal of Urban Research*, 17(1), 37-47.
- Josefsen, E., Mörkenstam, U., & Saglie, J. (2015). Different institutions within similar states: The Norwegian and Swedish Sámediggit. *Ethnopolitics*, 14(1), 32-51. <https://doi.org/10.1080/17449057.2014.926611>
- Kommunal- og moderniserings departementet (KMD). (2008). Lov om planlegging og byggesaksbehandling (plan- og bygningsloven) [The Planning and Building Procedures Act (Planning and Building Act)] (LOV-2008-06-27-71). https://lovdata.no/dokument/NL/lov/2008-06-27-71/*#*
- Kommunal- og moderniserings departementet (KMD). (2014). *Retningslinjer for innsigelse i plansaker etter plan- og bygningsloven* [Guidelines for objections to planning matters under the Planning and Building Act] (Rundskriv H-2/14). <https://www.regjeringen.no/no/dokumenter/retningslinjer-for-innsigelse-i-plansaker-etter-plan--og-bygningsloven/id751295/>
- Kristensen, R. (2016). *Planarbeid og samarbeid med reindriftsnæringen. Troms fylkeskommune. Regional plan for reindrift* [Planning work and cooperation with the reindeer husbandry industry. Troms county municipality. Regional plan for reindeer husbandry; Unpublished report].
- Kuokkanen, R. (2011). Indigenous economies, theories of subsistence, and women: Exploring the social economy model for Indigenous governance. *American Indian Quarterly*, 35(2), 215-240. <https://doi.org/10.5250/amerindiquar.35.2.0215>

Kuoljok, S. (2016). *Svenska lagar om minoriteter och minoritetsspråk* [Swedish laws on minorities and minority languages]. <http://www.samer.se/2773>

Landbruksdirektoratet. (2018). *Ressursregnskap for reindriftnæringen* [Resource accounts for the reindeer husbandry industry] (Rapport 30/2018). https://www.landbruksdirektoratet.no/no/reindriften/for-siidaandeler/publikasjoner/_attachment/72505?_ts=16778867528&download=true

Larsen, R. K., Raitio, K., Stinnerbom, M., & Wik-Karlsson, J. (2017). Sami-state collaboration in the governance of cumulative effects assessment: A critical action research approach. *Environmental Impact Assessment Review*, 64, 67-76. <https://doi.org/10.1016/j.eiar.2017.03.003>

Matunga, H. (2013). Theorizing Indigenous planning. In R. Walker, T. Jojola, & D. Natcher (Eds.), *Reclaiming Indigenous planning* (pp. 3-32). McGill-Queen's University Press.

Miljøverndepartementet (MD). (2009). *Lovkommentar til plandelen av ny plan- og bygningslov* [Law commentary on the plan part of the new Planning and Building Act]. Miljøverndepartementet.

Näsman, R. (2016). *Planering av vindkraft i Sápmi: Ett steg mot en hållbar energiproduktion eller en postkolonial maktutövning på samiska marker* [Planning of wind power in Sápmi: A step towards sustainable energy production or a post-colonial exercise of power on Sami lands]? https://stud.epsilon.slu.se/9735/1/nasman_r_161005.pdf

Nigussie, Z., Tsunekawa, A., Haregeweyn, N., Adgo, E., Cochrane, L., Floquet, A., & Abele, S. (2018). Applying Ostrom's institutional analysis and development framework to soil and water conservation activities in north-western Ethiopia. *Land Use Policy*, 71, 1-10. <https://doi.org/10.1016/j.landusepol.2017.11.039>

Norges offentlige utredninger (NOU) 1997:4. Naturgrunnlaget for samisk kultur [The natural basis for Sami culture]. Statens forvaltningstjeneste.

Norges offentlige utredninger (NOU) 2001:35. Forslag til endringer i reindriftsloven [Proposed amendments to the Reindeer Husbandry Act – consultation]. Statens forvaltningstjeneste.

Norges offentlige utredninger (NOU) 2003:14. Bedre kommunal og regional planlegging etter plan- og bygningsloven II [Better municipal and regional planning under the Planning and Building Act II]. Statens forvaltningstjeneste.

Ostrom, E. (1990). *Governing the commons: The evolution of institutions for collective action*. Cambridge University Press.

Ostrom, E. (2005). *Understanding Institutional Diversity*. Princeton University Press.

Ostrom, E. (2007). A diagnostic approach for going beyond panaceas. *Proceedings of the National Academy of Sciences*, 104(39), 15181-15187. <https://doi.org/10.1073/pnas.0702288104>

- Ostrom, E. (2011). Background on the institutional analysis and development framework. *Policy Studies Journal*, 39(1), 7-27. <https://doi.org/10.1111/j.1541-0072.2010.00394.x>
- Ostrom, E., Gardner, R., Walker, J., & Walker, J. (1994). *Rules, games, and common-pool resources*. University of Michigan Press. <https://doi.org/10.3998/mpub.9739>
- Odelstingsproposisjon (Ot. prp.) Nr. 32 (2007-2008). Om lov om planlegging og byggesaksbehandling (plan- og bygningsloven) (plandelen) [About the Planning and Building Act (Planning and Building Act) (the plan section)]. Miljøverndepartementet.
- Porter, L., & Barry, J. (2014). Bounded recognition: Urban planning and the textual mediation of Indigenous rights in Canada and USA. *Critical Policy Studies*, 9(1), 22-40. <https://doi.org/10.1080/19460171.2014.912960>
- Prusak, S. Y., Walker, R., & Innes, R. (2016). Toward Indigenous planning? First Nation community planning in Saskatchewan, Canada. *Journal of Planning Education and Research*, 36(4), 440-450. <https://doi.org/10.1177/0739456X15621147>
- Reimerson, E. (2015). *Nature, culture, rights: Exploring space for Indigenous agency in protected area discourses* (Doctoral dissertation). Umeå University. <http://www.diva-portal.org/smash/record.jsf?pid=diva2%3A865188&dswid=586>
- Riseth, J. Å. (2005). "So the last shall be first, and the first last"? Sámi reindeer management vs. other land users in mid-Scandinavia. In G. Cant, J. Inns, & A. Goodall (Eds.), *Discourses and silences: Indigenous Peoples, risks and resistance* (pp. 35-55). Department of Geography, University of Canterbury.
- Riseth, J. Å. (2016). *Situasjons- og verdikjedeanalyse for reindrifta i Troms* [Situational and value chain analysis for reindeer husbandry in Troms] (Rapport Norut. 15/2016). Troms fylkeskomme, Romssa fylkkasujohkan, & Norut.
- Riseth J. Å., & Nygaard, V. (2018). Samiske hensyn i planleggingen [Sami considerations in planning]. In G. S. Hanssen & N. Aarsæther (Eds.), *Plan- og bygningsloven - en lov for vår tid?* (pp. 307-324). Universitetsforlaget.
- Riseth, J. Å., & Tømmervik, H. (2017). *Klimautfordringer og arealforvaltning for reindrifta i Norge. Kunnskapsstatus og forslag til tiltak – eksempler fra Troms* [Climate challenges and land management for reindeer husbandry in Norway. Knowledge status and proposed measures - examples from Troms] (Rapport Norut. 6/2017). Norut.
- Riseth, J. Å., Tømmervik, H., & Forbes, B. C (2018). Sustainable and resilient reindeer herding. In M. Trylandand & S.J. Kutz (Eds.), *Reindeer and caribou: Health and disease* (pp. 23-43). CRC Press.

- Rudd, M. A. (2004). An institutional framework for designing and monitoring ecosystem-based fisheries management policy experiments. *Ecological Economics*, 48, 109–124. <https://doi.org/10.1016/j.ecolecon.2003.10.002>
- Samer. (2018). Samerna i siffror [The number of Sami in Sápmi]. <http://www.samer.se/samernaisiffror>
- Sametinget. (2016). *Förvaltningskommuner i det samiska området* [Management municipalities in the Sami area]. <https://www.sametinget.se/24399>
- Sametinget. (2017, May 22). Betingelser for å løse innsigelse – til reviderte plandokument etter 2. gangs off. ettersyn av kommuneplan Sortland [Conditions to resolve the objection to revised plan document after the second inspection of municipal plan Sortland; Letter to Sortland municipality]. Author.
- Sandström, P., Sandström, C., Svensson, J., Jougda, L., & Baer, K. (2012). Participatory GIS to mitigate conflicts between reindeer husbandry and forestry in Vilhelmina Model Forest, Sweden. *The Forestry Chronicle*, 88(3), 254-260. <https://doi.org/10.5558/tfc2012-051>
- Svensk Författningsamling (SFS) (1987:12). *Naturreisurslag* [Natural Resources Act].
- Svensk Författningsamling (SFS) (1992:1433). *Sametingslag* [The Sami Parliamentary Act].
- Svensk Författningsamling (SFS) (1998:808). *Miljöbalk* [Environmental Code].
- Svensk Författningsamling (SFS) (2009:724). *Lagen om nationella minoriteter och minoritetsspråk* [National Minorities and Minority Languages Act].
- Svensk Författningsamling (SFS) (2010:900). *Plan och Bygglag* [Planning and Building Act].
- Skum, N. H. J. (2017). *Arealplanlegging og reindriftsinteresser. En casestudie av planprosesser i Røros kommune*. Masteroppgave i fysisk planlegging [Land planning and reindeer husbandry interests. A case study of planning processes in Røros municipality] (Master's thesis). NTNU.
- Smajgl, A., Leitch, A., & Lynam, T. (2009). *Outback institutions: An application of the Institutional Analysis and Development (IAD) framework to four case studies in Australia's outback* (Report 31). DKCRC. http://www.desertknowledgecrc.com.au/resource/DKCRC-Report-31-Outback-Institutions_Application-of-the-IAD-framework.pdf
- Social Democratic Party, Vilhelmina. (2017, November 6). *Comments on the MCP draft*. Author
- Solberg, H.- M. (2016, November 15). Samordnet uttalelse med innsigelse—Kommuneplanens arealdel 2016-2028—Sortland. Brev til Sortland kommune [Coordinated statement with objection—Area plan area 2016-2028—Sortland; Letter to Sortland municipality]. <https://www.fylkesmannen.no/contentassets/5154fbc7798c4546b2f154355e480344/samordnet-uttalelse-med-innsigelse---kommuneplanens-arealdel-2016-2028---sortland.pdf>

- Sortland kommune. (2015, August 27). Byplan Sortland – Blåbyen 2015-2027. Konsekvensutredning [Town plan Sortland - Blåbyen 2015-2027. Impact assessment]. Author.
- Sortland kommune. (2017, February 9). Beskrivelse med konsekvensutredning for kommuneplanens arealdel 2017-2028 [Description with impact assessment for area plan 2017-2028]. Author.
- Sortland kommune. (2018, April 27). Kommuneplanens arealdel—drøfting vedr. mekling og evt. behandling i departementet [Area plan area—discussion on mediation and possible treatment in the department]. Author.
- Statens offentliga utredningar (SOU). (1971:75). *Hushållning med mark och vatten. Inventeringar, planöverbäganden om vissa naturresurser, former för fortlöpande riksplanering, lagstiftning* [Housekeeping with land and water. Inventories, planning considerations on certain natural resources, forms of continuous national planning, legislation]. Civildepartementet.
- Statens offentliga utredningar (SOU). (2015:99). *Planering och beslut för hållbar utveckling* [Planning and decisions for sustainable development]. Riksintresseutredningen.
- Thellbro, C. (2017). *Spatial planning for sustainable rural municipalities. When theory and practice meet* (Doctoral dissertation). Swedish University of Agricultural Sciences, Umeå, Sweden.
- United Nations. (2007). *United Nations Declaration on the Rights of Indigenous Peoples*. <https://www.un.org/development/desa/indigenouspeoples/declaration-on-the-rights-of-indigenous-peoples.html>
- Vilhelmina North & South RHDs. (2018). *Vilhelmina norra sameby och Vilhelmina södra samebys remissyttrande på Vilhelmina kommuns förslag till översiktsplan* [Vilhelmina northern sameby and Vilhelmina southern sameby's referral statement on Vilhelmina municipality's proposal for an outline plan]. Author.
- Walker, R., Natcher, D., & Jojola, T. (Eds.) (2013). *Reclaiming Indigenous planning* (Vol. 70). McGill-Queen's Press.
- Walsh, F., Dobson, P., & Douglas, J. (2013). Anpernirrentye: A framework for enhanced application of Indigenous ecological knowledge in natural resource management. *Ecology and Society*, 18(3). <http://doi.org/10.5751/ES-05501-180318>

Appendix

Table A1. Summary of Empirical Material in Study

Empirical Material	Norway	Sweden
Official documents*	3 National laws	3 National laws
	3 Official Norwegian reports	2 Official Swedish reports
	1 White paper	5 Propositions 5 Documents from the National Board of Housing, Swedish Environmental Protection Agency, and the Sami Parliament
Strategy descriptions, political referrals and statements	6 Documents including correspondence between the Ministry of Agriculture & Food and county councillors	5 Political documents on the draft version of the MCP 19 Documents in the mandatory consultation
	40 Planning documents and political resolutions including correspondence between municipal level and government	13 Documents in the exhibition stage 3 Documents including responses by the municipal administration
Focus groups	0	Focus groups in two consecutive rounds: 4 Focus groups in the first round 3 Focus groups in the second round In total, 78 persons participated in the focus groups
Observations	Attendance at 2 planning conferences	Attendance at 2 planning workshops and participation at a municipal council in Vilhelmina
Interviews	2 Municipal planners 2 Municipal politicians 8 Governors 2 Administrative staff of the Sami Parliament	1 Responsible planner at the Sami Parliament
Reports and comments in local media	20 Articles including own participation in the debate	0

Detailed Description of the Official Documents

Norway:

- The Planning and Building Act
- The Reindeer Husbandry Act
- Constitution
- The Natural Basis for Sami Culture-NOU 1997:4, Official Norwegian Reports
- Committee for Reindeer Husbandry Act-NOU 2001:35, Official Norwegian Reports
- Better Municipal and Regional Planning-NOU, 2003:14, Official Norwegian Reports
- *Reindeer husbandry. Long traditions and unique possibilities*, St Meld 31 (2016-2017), White paper

Sweden:

- Svensk Författningsammling (SFS). 2010:200. Planning and Building Act.
- Svensk Författningsammling (SFS). 2009:724. National Minorities and Minority Languages Act.
- Svensk Författningsammling (SFS). 1998:808. Environmental Act.
- Statens offentliga utredningar (SOU). (1971:75). *Hushållning med mark och vatten. Inventeringar, Planöversväganden om vissa naturresurser, Former för fortlöpande riksplanering, lagstiftning* [Land and water management: Inventories, planning considerations on certain natural resources, forms of continuous physical national planning, legislation]. Civildepartementet.
- Statens offentliga utredningar (SOU). (2015:99). *Planering och beslut för hållbar utveckling*. Riksstyrelsen [Planning and decisions for sustainable development. National interest investigation].
- Prop. 2009/10:80 En reformerad grundlag. [Prop. 2009/10: 80 A Reformed Constitution.]
- Prop. 1998/99:143 Nationella minoriteter i Sverige. [Prop. 1998/99:143 National Minorities in Sweden.]
- Prop. 1985/86:3 med förslag till lag om hushållning med naturresurser m.m. [Prop. 1985/86:3 with draft law on the management of natural resources, etc.]
- Prop. 1985/86:1 Förslag till ny plan- och bygglag. [Prop. 1985/86:1 Proposition for a new Planning and Building Act.]
- Prop. 1976/77: 80 Regeringens proposition 1976/77:80 om insatser för samerna. [Prop. 1976/77: 80 Government Bill 1976/77: 80 on efforts for Sami People.]
- National Board of Housing, Building and Planning. (2016). *Riksstyrelsen är nationellt betydelsefulla områden* [National interests are nationally important areas]. Author.
- National Board of Housing, Building and Planning. (2016). *Hållbar utveckling i översiktsplaneringen* [Sustainable development in the municipal comprehensive planning]. Author.
- Naturvårdsverket. (2014). Förslag till en strategi för miljömålet Storslagen fjällmiljö [Proposal for a strategy to address environmental targets for large mountain environments]. (NV 04173-13). Author.
- Sametinget. (2017). *Renbruksplaner* [Reindeer husbandry plans]. Author.
- Sametinget. (2017). *Omvärldsfaktorer* [External factors]. Author.