

Canadian Medical Education Journal Revue canadienne de l'éducation médicale



Arscience 2.0

Rachelle Lee-Krueger

Volume 13, numéro 2, 2022

URI : <https://id.erudit.org/iderudit/1090351ar>

DOI : <https://doi.org/10.36834/cmej.75247>

[Aller au sommaire du numéro](#)

Éditeur(s)

Canadian Medical Education Journal

ISSN

1923-1202 (numérique)

[Découvrir la revue](#)

Citer ce document

Lee-Krueger, R. (2022). Arscience 2.0. *Canadian Medical Education Journal / Revue canadienne de l'éducation médicale*, 13(2), 252–252.
<https://doi.org/10.36834/cmej.75247>

© Rachelle Lee-Krueger, 2022



Cet document est protégé par la loi sur le droit d'auteur. L'utilisation des services d'Érudit (y compris la reproduction) est assujettie à sa politique d'utilisation que vous pouvez consulter en ligne.

<https://apropos.erudit.org/fr/usagers/politique-dutilisation/>

é
rudit

Cet article est diffusé et préservé par Érudit.

Érudit est un consortium interuniversitaire sans but lucratif composé de l'Université de Montréal, l'Université Laval et l'Université du Québec à Montréal. Il a pour mission la promotion et la valorisation de la recherche.

<https://www.erudit.org/fr/>

Arscience 2.0

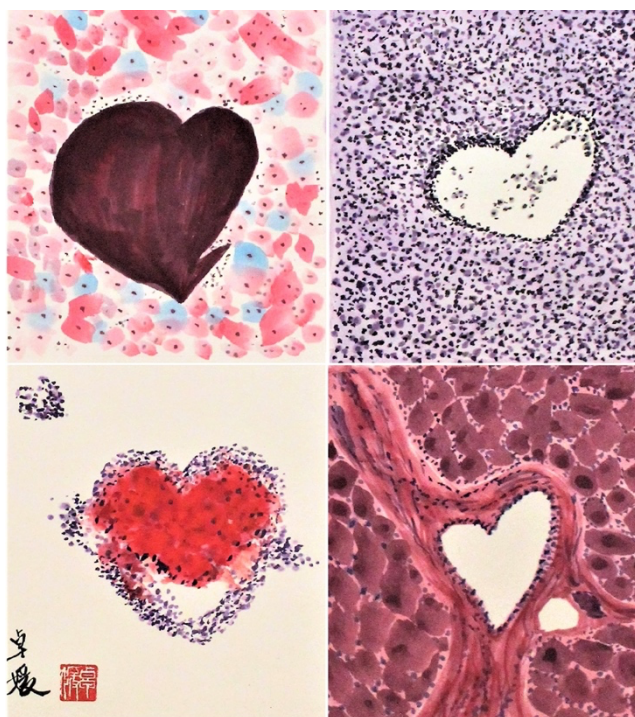
Rachelle Lee-Krueger¹

¹University of Ottawa, Ontario, Canada

Correspondence to: Rachelle Lee-Krueger; email: rlee062@uottawa.ca

Published: May 3, 2022; CMEJ 2022, 12(3) Available at <https://doi.org/10.36834/cmej.75247>

© 2022 Lee-Krueger; licensee Synergies Partners. This is an Open Journal Systems article distributed under the terms of the Creative Commons Attribution License. (<https://creativecommons.org/licenses/by-nc-nd/4.0>) which permits unrestricted use, distribution, and reproduction in any medium, provided the original work is cited.



From left to right, top to bottom: Pap smear, lymph node, lung carcinoma, parotid gland

This artwork is submitted as a sequel to the cover art published in the October 2019 issue of *Academic Medicine*.¹ To depict the foundations of western medicine, the artist chose Chinese painting as the medium to symbolize the intersecting cultures and values that shape contemporary medicine. This *Arscience* series comprises of the artist's inherent reflections about becoming a medical educator and researcher – one who started as an anatomy teaching associate for a medical school to eventually finding an academic niche in the broad world of medical education.

Since its creation, the artist hopes to embody *Arscience* with a new meaning to how she now views this artwork. Since joining a new academic community in completing a PhD, *Arscience 2.0* reminds the artist about her roots and the life mentors who continue to support her through this vocational journey for shaping the process of medical education and knowledge creation. The artist experienced first-hand the importance of humanistic and relationship-centred learning in medicine globally. *Arscience 2.0* is dedicated to clinicians, educators, and researchers who have sacrificed tirelessly to ensure that the safest practices are always upheld. As we come out from the exhausting battle of a global pandemic, it is these trusting connections that will truly support us through a recovery from the hurt and losses.

Arscience 2.0 marks the end of this art series, but these values should remain as the fundamental tenets of medical educationalists contributing to the advancement of this field

Disclosures: *Arscience*, which contains a total of nine images—four images published for cover art in the October 2019 issue and four new images for this issue—is currently displayed within the Office of Health and Medical Education Scholarship at the Cumming School of Medicine, University of Calgary, Calgary, Alberta. Artist owns the artwork and has permission to publish.

Acknowledgements: With gratitude to Gretchen Greer and ongoing supporters of this artwork—past, present, and future.

References

1. Lee-Krueger R. Artist's statement: *Arscience*, *Acad Med*: Oct 2019;94(10): p 1471
<https://doi.org/10.1097/ACM.0000000000002880>