

Late Wisconsinan Morphosedimentary Sequences of the Lower Coppermine River Valley, Nunavut and Northwest Territories

Denis A. St-Onge

Volume 39, Number 3, 2012

URI: https://id.erudit.org/iderudit/geocan39_3pfh02

[See table of contents](#)

Publisher(s)

The Geological Association of Canada

ISSN

0315-0941 (print)

1911-4850 (digital)

[Explore this journal](#)

Cite this article

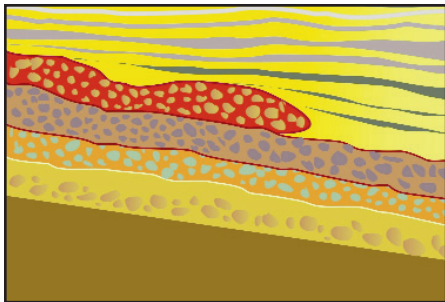
St-Onge, D. A. (2012). Late Wisconsinan Morphosedimentary Sequences of the Lower Coppermine River Valley, Nunavut and Northwest Territories. *Geoscience Canada*, 39(3), 132–147.

Article abstract

A series of late Wisconsinan sedimentary sequences occupy parts of the Coppermine River valley, and are grouped into five morphosedimentary zones representing four environments at the time of last ice retreat: glacial, paraglacial, lacustrine and marine. The sequences commonly interfinger, and document episodic deposition in time-transgressive environments related to ice frontal positions. Glacial and paraglacial sediments are, in part, reworked in a glaciolacustrine environment extending from delta topsets of bouldery gravel to bottomset rhythmites of silt-clay. The glacial-lake rhythmites formed the matrix of a later sequence of debris-flow events, which emplaced a wedge of massive diamicton in the postglacial marine sediments. This sedimentary sequence, composed of a chaotic mass of heterogeneous material that is intimately mixed, and is accumulated in the form of a semi-fluid body in a marine environment, is possibly the best exposed Quaternary olistostrome.

A general overview of the Quaternary history of the area east of Great Bear Lake and north of Point Lake shows: a) deglaciation preceded by large-scale downwasting with no discernable readvance pulses, b) that the Coppermine River valley between Point Lake and Rocky Defile Rapids was ice-free by 10 250 ¹⁴C years BP, and, c) that earth-shaping processes were intensely active for a short period at the time of deglaciation; since then the landscape has been mostly quiescent.

PAUL F. HOFFMAN SERIES



Late Wisconsinan Morphosedimentary Sequences of the Lower Coppermine River Valley, Nunavut and Northwest Territories

Denis A. St-Onge

Emeritus Scientist

Geological Survey of Canada

601 Booth St. #548, Ottawa, ON,
Canada, K1A 0E8

E-mail: Denis.St-Onge@nrcan-nrcan.gc.ca

SUMMARY

A series of late Wisconsinan sedimentary sequences occupy parts of the Coppermine River valley, and are grouped into five morphosedimentary zones representing four environments at the time of last ice retreat: glacial, paraglacial, lacustrine and marine. The sequences commonly interfinger, and document episodic deposition in time-transgressive environments related to ice frontal positions. Glacial and paraglacial sediments are, in part, reworked in a glaciolacustrine environment extending from delta topsets of bouldery gravel to bottomset rhythmites of silt-clay. The glacial-lake rhythmites formed the matrix of a later sequence of debris-flow events,

which emplaced a wedge of massive diamicton in the postglacial marine sediments. This sedimentary sequence, composed of a chaotic mass of heterogeneous material that is intimately mixed, and is accumulated in the form of a semi-fluid body in a marine environment, is possibly the best exposed Quaternary olistostrome.

A general overview of the Quaternary history of the area east of Great Bear Lake and north of Point Lake shows: a) deglaciation proceeded by large-scale downwasting with no discernable readvance pulses, b) that the Coppermine River valley between Point Lake and Rocky Defile Rapids was ice-free by 10 250 ¹⁴C years BP, and, c) that earth-shaping processes were intensely active for a short period at the time of deglaciation; since then the landscape has been mostly quiescent.

SOMMAIRE

Des séquences sédimentaires de la fin du Wisconsinien qui occupent des sections de la vallée de la rivière Coppermine définissent cinq zones morphosédimentaires représentant quatre environnements différents du retrait glaciaire, soit les milieux glaciaire, paraglaciaire, lacustre et marin. Ces séquences qui s'interdigitent souvent, documentent des épisodes sédimentaires de milieux qui varient avec le temps et les changements de position du front glaciaire. Les sédiments glaciaires et paraglaciaires sont en partie remaniés dans des milieux glaciolacustres allant des lits topset deltaïques de gravier à blocs jusqu'à des rythmites de limon-argile. Les rythmites glaciolacustres constituent la matrice d'une séquence subséquente de lave torrentielle, qui a déposé un énorme prisme de diamictons dans les sédiments

marins postglaciaires. Cette séquence sédimentaire, composée d'une masse chaotique de matériaux hétérogènes intimement mélangés accumulée sous forme semi-fluide en milieu marin, est peut-être le meilleur affleurement d'olistostrome quaternaire.

Un coup d'œil sur l'histoire du Quaternaire de la région à l'est du Grand lac de l'Ours et au nord du lac Point, montre : a) que la déglaciation s'est déroulée par fonte du glacier sans réavancée discernable, b) que la vallée de la rivière Coppermine entre le lac Point et les rapides de Rocky Defile était libre de glace vers 10 250 ¹⁴C BP, et c) que les mécanismes d'érosion ont été intenses pendant une courte période au moment de la déglaciation; depuis lors, le paysage est demeuré relativement statique.

INTRODUCTION

On July 8, 1821, John Richardson, MD, a member of John Franklin's party that was on its way to the Polar Sea, made the following observations from a point above Rocky Defile Rapids: *"The river contracting to the width of 120 yards, at length forces itself through the rocky defile, a narrow channel which it has cut during a lapse of ages in the shelving foot of a hill. The channel is bounded by perpendicular rocky walls, varying in height from 100 to 150 feet, above which there is an immense body of fine sand. The form of the land would lead one to suppose, that the river at some distant period, pent by the rocks, formed a long narrow lake, whose superfluous waters were discharged by a magnificent cascade - an opinion which is countenanced by the figures of the sandy ridges, which rise immediately above the rapid to the height of 500 or 600 feet"* (Franklin 1823, p. 527). The lake inferred by a very astute observer of nature was named, 150 years later, Glacial Lake Coppermine (St-Onge 1980).

The late Wisconsinan ice sheet was centred on the Canadian Shield and covered most of the Canadian land mass east of the Cordillera and south of the Queen Elizabeth Islands. Retreat from its maximum is now reasonably well understood and constrained (Dyke 2004). Starting 12 500 ¹⁴C years BP, the northwestern part of the ice sheet melted back, generally west to east. As land was being exposed, large lakes were formed at, or near, the ice front. By 10 250 ¹⁴C years BP the Coppermine River valley, south of Rocky Defile Rapids was freed by the receding ice sheet and, as a result, a large lake occupied the valley. (All dates in this paper are conventional ¹⁴C years BP).

Meltwater from the ice sheet east of the valley carried enormous quantities of sediment into Glacial Lake Coppermine. Well exposed sedimentary sequences make it possible to document the history of this lake from its inception to its eventual drainage into Coronation Gulf. Five summers of systematic mapping (St-Onge 1988) provided the data required to reconstruct the complex history of this lake, which extended from Point Lake to Rocky Defile Rapids (Fig. 1) and, based on sedimentary facies, to propose a general model of the deglacial history of the Coppermine River region.

The bedrock south of Big Bend (Fig. 1) is part of the Wopmay Orogen (Hoffman 1984) composed of five tectonic zones which include a great variety of metamorphic rocks and granite bodies. North of Big Bend, northward-dipping Precambrian sedimentary rocks, mostly sandstone, are profusely intruded by Coronation Gabbro sills (Baragar and Donaldson 1973).

This paper is dedicated to Dr. Paul Hoffman who, in 1979, convinced me to go back to field work and map the Quaternary Geology sediments in the Coppermine River region.

MORPHOSEDIMENTARY ZONES

Along a transect, from Point Lake to Coronation Gulf, five major morphosedimentary zones are identified (Fig. 2). Each comprises several sedimentary facies reflecting environments of deposition, during deglaciation phases (Fig. 3).



Figure 1. Location map.

Zone I: Point Lake – White Sandy River

Prior to glaciation, the Coppermine River valley was well established in the rolling upland underlain by rocks of the Canadian Shield between Point Lake and Coronation Gulf (Fig. 1). The Coppermine River valley is now mantled by a discontinuous blanket of glacial drift and is partly filled with glacial, glaciofluvial, glaciolacustrine and fluvial sediments (St-Onge 1984).

Ice originating from a dispersal centre to the east was responsible for the emplacement of the thick till in the Scotstoun Lake region (Fig. 3). The melting of this ice mass produced enormous amounts of water concentrated in subglacial, englacial and

paraglacial conduits, which entrained large amounts of debris that were deposited as gravel and sand sediment bodies. In places, powerful meltwater streams also removed all, but the largest boulders, in their path. Thus, corridors were created in which sections of bedrock alternate with ice-contact features, such as esker ridges, transverse and circular ridges of glaciofluvial gravel and minor morainic ridges (Fig. 3). The concentration of very coarse material at fairly regular intervals along eskers that are, in places, continuous for several tens of kilometres, suggests they were constructed as successive, comparatively short segments (St-Onge 1984).

Deltas of coarse gravel and

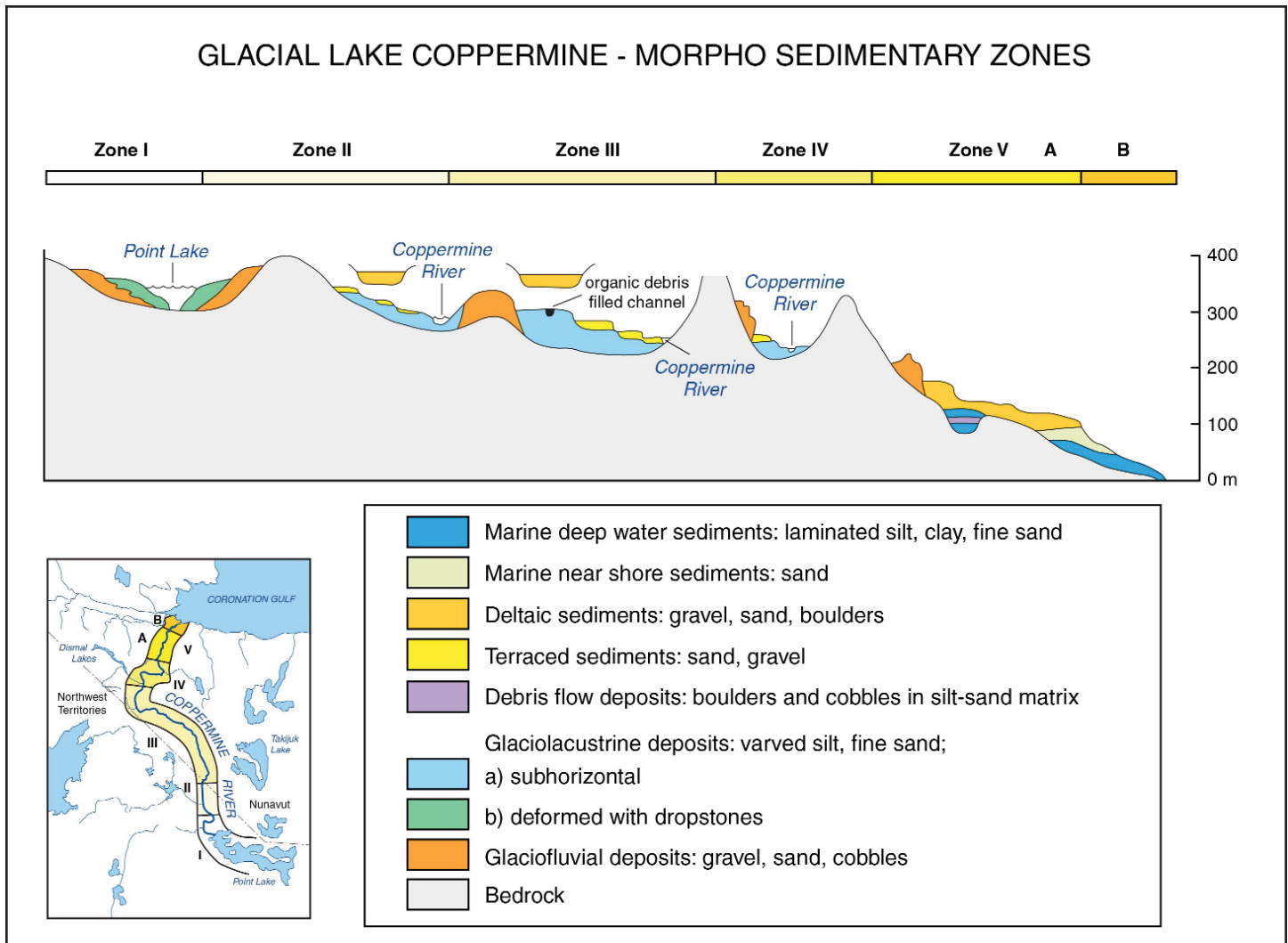


Figure 2. Glacial Lake Coppermine – Morphosedimentary Zones.

sand (Fig. 4) were constructed on both sides of the river valley, but are more common on the eastern side. The higher perched deltas lay at approximately 370 to 365 m asl (Fig. 5), indicating that they are associated with the similarly elevated oldest documented outlet of Glacial Lake Coppermine, through Kamut Lake (Fig. 1; St-Onge et al. 1981).

South of Rocknest Lake, numerous lakes and streams are fringed by silty clay rhythmite layers, up to 6 m thick; these layers contain numerous small stones and boulders and are intensely deformed. Fresh exposures of the lower unit are more deformed than the upper unit, indicating that the deformation is, in part, syndepositional and probably resulted from the gradual melting of buried glacier ice. These rhythmites were likely

deposited in water bodies confined to low areas between bedrock or till slopes, and large blocks of dead ice. Boulders melting out from the margin of the ice dropped onto the rhythmite deposits. Final melting of the glacier ice triggered extensive collapse and deformation within the sediments. These deformed rhythmite layers indicate that at some stage, the headwaters of the Kamut Outlet phase of Glacial Lake Coppermine were in stagnant ice from the disintegrating ice mass in the Scotstoun Lake area (Fig. 1; St-Onge 1984).

From 32 m above the present level of the Coppermine River, extensive sand terraces mark stages in down-cutting (Fig. 5; St-Onge et al. 1981).

Zone II: White Sandy River to Big Bend

Between the White Sandy River in the south and the Big Bend in the north (Fig. 1), and to the east and north of the Coppermine River valley, thick deposits of glacial drift are found in the Mouse River Graben between the Coppermine River and the headwaters of the Mouse River (Fig. 2). Glaciofluvial sand and gravel are locally abundant and occur typically as esker ridges flanked by terraces up to one kilometre wide. Ridges generally trend southeast to northwest.

Within the Coppermine River valley are abundant exposures of coarsening-upward sequences of glaciolacustrine sediments ranging from deep water sandy silt rhythmites, through shallow water sand bodies to deltas of coarse sand and gravel (Fig.

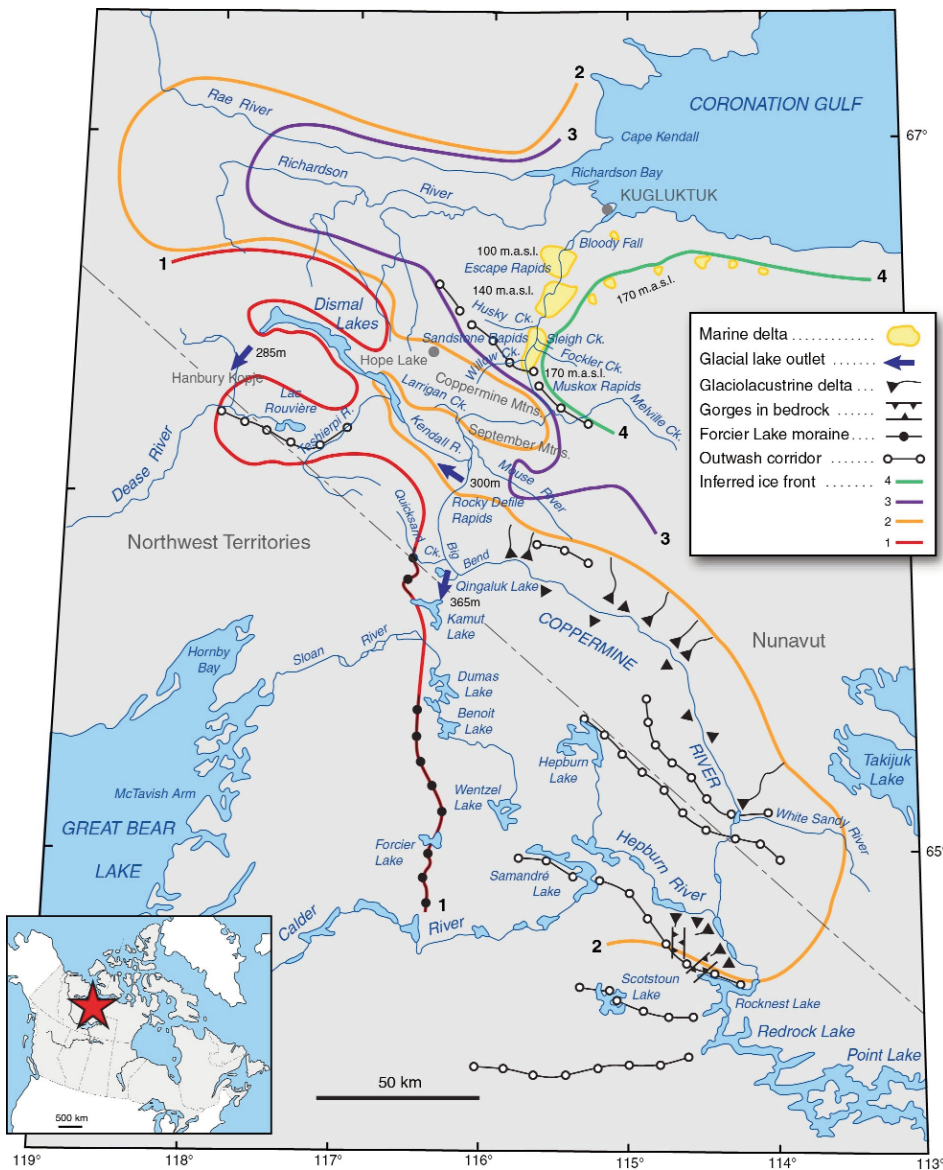


Figure 3. Deglaciation phases.

5). In places, glaciofluvial sand and gravel protrude above the lacustrine sediments, indicating that in the very early stages of deglaciation, meltwater was flowing in ice tunnels at the base of the present valley.

Deltas (Figs. 4 and 5) with well-preserved braided channels on their surface are located in the valleys of numerous tributaries on either side of the Coppermine River valley. The altitudes are consistently between 360 and 370 m asl. Deltas on the east and north side of the valley are composed of coarser gravel than those on the south and west side, which tend to be sandier. While the deltas to the west and south were constructed by meltwater from a disintegrating residual ice

mass, the eastern and northern deltas were constructed by more powerful streams originating from a proximal, and still active, ice front to the east.

It has not been possible to determine if the absence of deltas between 330 and 370 m (Fig. 5) was originally infilled in part, or not at all: in other words it has not been possible to determine how much, if any, of the rhythmite layers were removed in the early phase of downcutting by the river.

Silty sand rhythmite units (Fig. 5) are exposed in numerous sections; their buff-white colour makes them highly visible both on air photographs and in the field. The 'summer' layers, composed of sandy silt, vary in thick-

ness from 1 to 50 cm, the thinner 'winter' layers of silty clay rarely exceed 2 cm. Counting indicate that in excess of 500 individual doublets are exposed in the thicker sections.

A crossbedded sandy unit, typically between 2 and 3 m thick (Fig. 5), is deposited on top of the rhythmite sequence. This remnant of an alluvial sand plain is commonly associated with coarse-grained, valley-side deltas and marks the minimum level of infilling of the Coppermine River valley up to the level of 320 m asl, 50 to 70 m above present valley floor.

During the downcutting phase of the ancestral Coppermine River numerous terraces were formed. The oldest preserved are at levels of 32, 25 and 20 m above present river level (Fig. 5). All these are erosional terraces carved into the rhythmite layers. They represent downcutting between the Kamut outlet phase at 370 m asl and the Dismal Lakes outlet phase at 285 m asl (Fig. 3). A lower terrace between 12 and 14 m above present river level is the result of aggradation (Fig. 5). A log found in this unit was dated at 4370 ± 60 ¹⁴C years BP (GSC-3135); the cause for the aggradation and later erosion has not been determined but could be due to partial blocking of the river by a landslide farther downstream.

Zone III: Big Bend to Rocky Defile Rapids Section

To the west of the Coppermine River valley between Big Bend and Kendall River, a 600-m high plateau of moderate relief is breached by two broad valleys draining east into the Coppermine River valley: the Quicksand Creek and Qingaluk Lake valleys (Fig. 1) in which are concentrated thick accumulations of glacial drift (Figs. 2 and 6). A narrow morainic ridge crosses the plateau between these two valleys (Fig. 3). West of the ridge a large body of glaciofluvial sand and gravel occupies the trough of Qingaluk Lake valley. This sedimentary unit was emplaced by west-flowing meltwater streams running from an ice mass with a frontal position marked by the morainic ridge. Minor recession of the ice front allowed the drainage to change from west to south and finally to its present easterly course into the Coppermine



Figure 4. Glaciolacustrine delta, north side of the Coppermine River Valley 16 km upstream of Big Bend (Fig. 3).

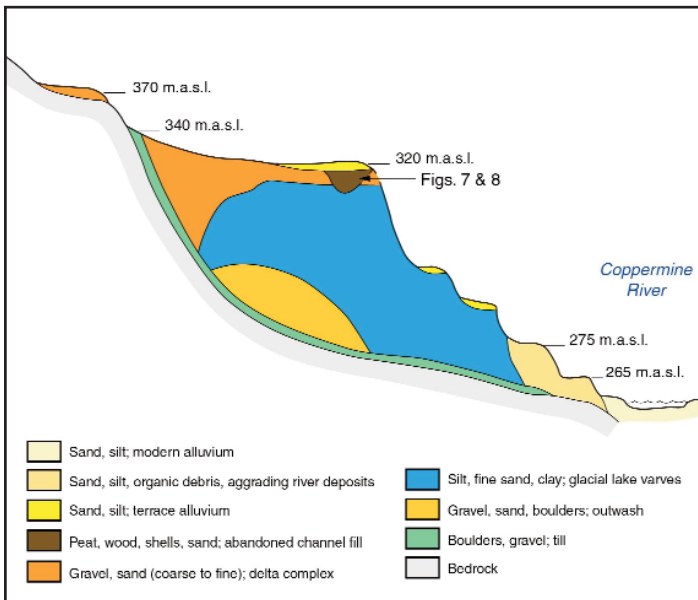
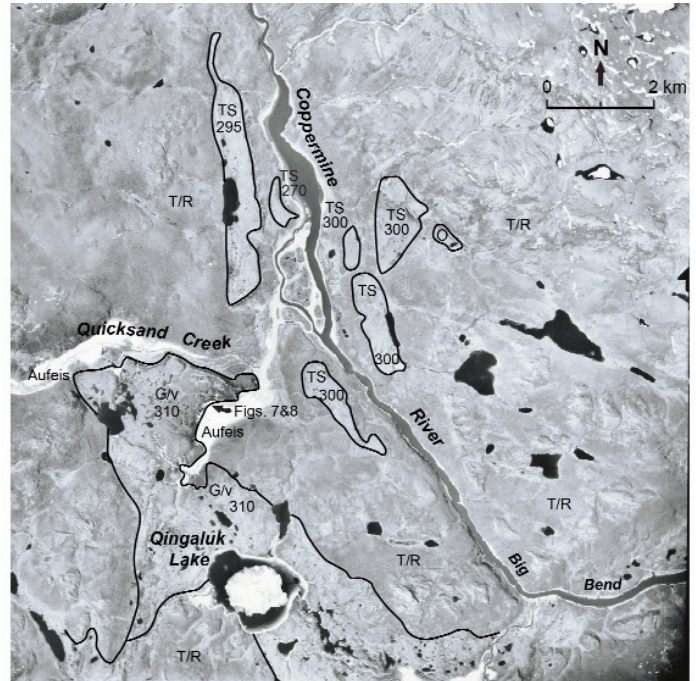


Figure 5. Composite stratigraphic section, Glacial Lake Coppermine; not to scale.

River (St-Onge and Geurts 1982).

Qingaluk Lake occupies a depression in a large sand plain that partly fills a broad arc-shaped depression in the bedrock plateau west of the Coppermine River valley (Fig. 6). The depression probably represents a former course of the ancestral Coppermine River valley which was earlier abandoned. As is the case for the valley upstream of Big Bend, the sandy silt rhythmite of the Qingaluk Lake valley resulted from infilling up to 320 m asl by Glacial Lake Coppermine sediment. This sand plain has a surface elevation of 300–320 m asl and is underlain by a thick sequence of sandy silt rhythmites.

This sequence is well exposed (Fig. 7) on the northwest side of a small southerly branch of Quicksand Creek (St-Onge 1980). A former channel carved in the sand unit was later filled with organic rich fill (Fig. 7). A piece of wood at the base of this sequence has yielded a date of 8400 ± 80 ^{14}C years BP (GSC-2959), whereas a ~ 90 cm layer of peat at the top of the



Legend: TS : Terrace of medium to coarse sand
G/v : Coarse sand and fine gravel over fine sand, silt and clay varves
O : Glaciofluvial gravel and sand, ice contact deposits
T/R : Discontinuous till and bedrock knobs
300 : Elevation in m a.s.l.

Figure 6. This air photograph (A13609-79) shows the area of Big Bend, Qingaluk Lake and Quicksand Creek. The section shown in Figs. 7 and 8 is on the north side of a patch of aufeis on the southern tributary of Quicksand Creek. Qingaluk Lake is within an extensive coarse sand and fine gravel plain within a broad bedrock depression. Well developed terraces are found along the Coppermine River.



Figure 7. Quicksand Creek section showing organic rich fill in paleochannel in 310 m asl. Glacial Lake Coppermine delta (Fig. 6).

fill sequence has yielded two dates; the basal layer is 7180 ± 100 ^{14}C years BP (GSC-4495) and the top of the peat is 870 ± 90 ^{14}C years BP (GSC-4486).

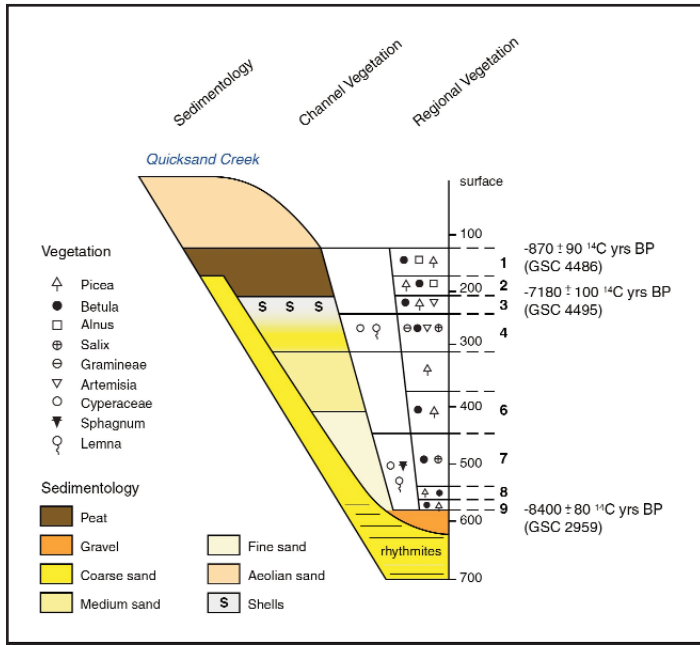


Figure 8. Quicksand Creek section, palynology and ¹⁴C dates.

These dates indicate that the initial infill of the channel with sand and organic debris was completed in about 1200 years followed by over 6000 years of peat accumulation in a marshy environment. Detailed study of the organic material in this channel indicates a number of climatic fluctuations inferred from variations in pollen assemblages (Fig. 8). Within the Coppermine River valley, broad terraces are found on either side of the river at 300 m asl and mark a phase in the downcutting by the river. Like terraces at similar altitudes upstream, they are related to the outlet of Dismal Lakes, which is at approximately 285 m asl (Fig. 3). The Rocky Defile Rapids (Fig. 1) were first described by John Richardson (Franklin 1823, p.153). An abandoned section of the Coppermine River valley is filled, in part, by a 110-m thick deposit of coarse sand, boulders and gravel (Fig. 9). Basal unit A is a massive structureless, high sand content diamict. Grain size ranges from a silty sand matrix to boulders over 1 m in diameter. Large clasts tend to be well rounded and lithologically diverse. The upper contact with unit B is quite abrupt. The base of 25-m thick unit B consists of 0.5 m of massive silty sand grading into a laminated sand and silty sand layer 2 to 10 cm thick. Scattered coarse-sand beds containing rare pebbles near the base are overlain by poor-

ly defined ripple sets. Large trough crossbeds have a 050° current direction. Laminated sand beds are truncated by trough crossbeds that dip 25° to the west. Ripples and planar cross-stratification indicate paleocurrent directions of 255 to 265°. Near the top of unit B, sand grades into sandy silt and occasional clay layers, up to 5-cm thick, which appear convoluted. Laminated silt beds are also found near the top of unit B (Fig. 9). Unit C is a sand matrix diamict having clasts up to 1 m in diameter that overlies unit B. This 12-m thick unit, grades upward into a coarse sand which, in turn, is overlain by silty clay lenses intercalated with a 50-cm thick medium sand bed (Unit D). The uppermost unit, exposed at Rocky Defile section, is a 15-m thick, massive, gravelly sand and cobbles up to 30 cm in diameter; coarse sand and granules predominate.

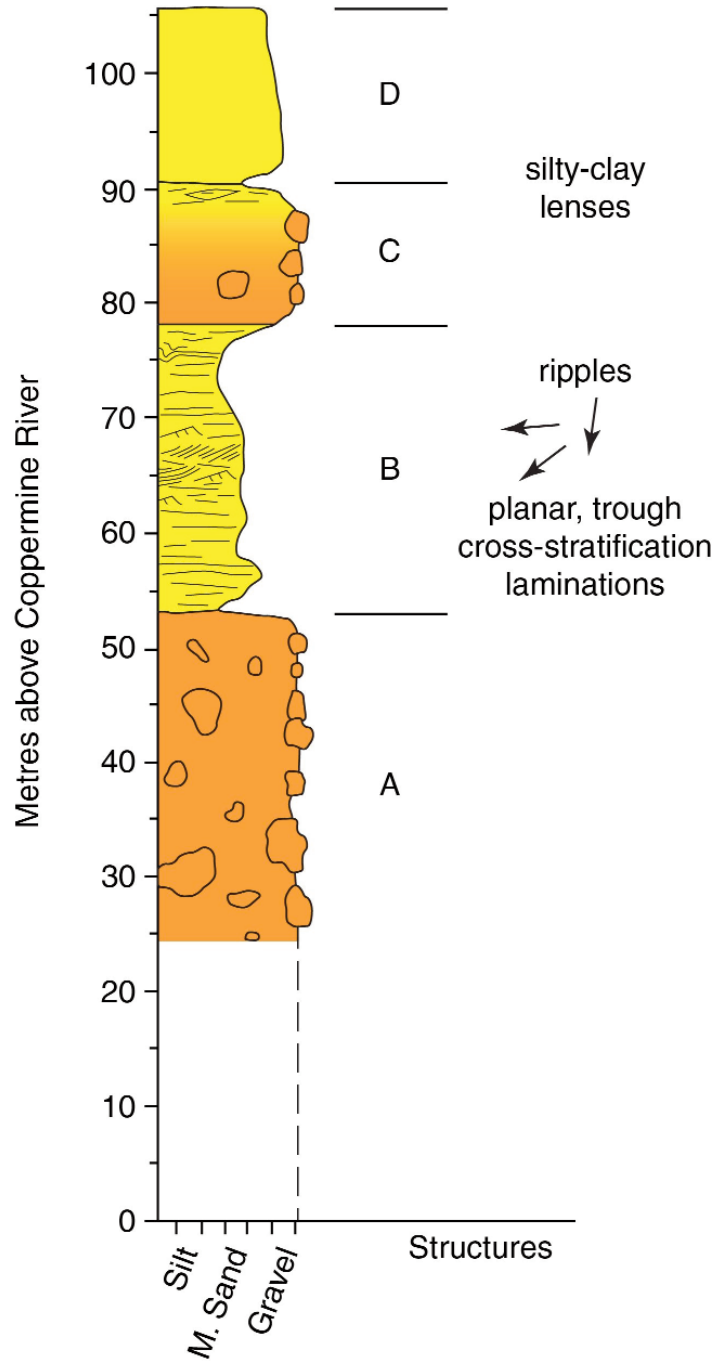


Figure 9. Rocky Defile Rapids Section.

This sequence is interpreted as an ice-contact complex deposited by a stream flowing west-southwest from glacier ice into Glacial Lake Coppermine; it is here that northward drainage was dammed during the 365-m high level (Kamut Lake outlet phase) of Glacial Lake Coppermine (Ice front 2, Fig.3). To the north of this ridge, a channel that cuts across a bedrock spur connects the Coppermine River valley with the Kendall



- Ag : Alluvium, sand and gravel
 - Tg : Terrace of bouldry gravel and sand
 - Ls : Glaciolacustrine medium to fine sand
 - Gv : Coarse sand and fine gravel over fine sand, silt and along varves
 - Dg : Deltaic bouldry gravel and sand
 - K : Kames of ice contact gravel and sand, terraces or isolated hills with collapsed margins
 - gT : Till washed boulders, gravel and sand
 - O : Glaciolacustrine gravel and sand
 - Tb : Till, blanket cover, basal and meltout
 - T/R : Thin till and bedrock
- ▲▲▲▲ Terrace scarp
 - Boulder ridge
 - ▬▬▬▬ Glacial Lake Coppermine spillway
 - ◀◀◀◀ Esker ridge
 - 300 Elevation in m a.s.l.

Figure 10. Air photograph of lower reaches of Kendall River and Mouse River basins. This air photograph (A22414-88) of the area just north of Rocky Defile Rapids shows a complex distribution of valley side kame terraces and perched deltaic landforms above drumlinized or washed till surfaces. The Coppermine River has cut flights of terraces into large delta-shaped gravel deposits. These alluvial deposits generally lie below the upper surface of glaciolacustrine rhythmites that are overlain by coarse sand. A puzzling feature of the gravel deposit south of the Kendall River is the occurrence of numerous ridges of boulders fringing kettle-like lakes.

River valley. This abandoned channel has a sill elevation of 300 m.

Zone IV: Rocky Defile Rapids to Melville Creek Section

North of Rocky Defile Rapids (Figs. 1 and 3), the Coppermine River crosses a broad NW-SE bedrock depression bounded on the south by the rolling upland of the Big Bend region (600-800 m asl) and to the north by the Coppermine and September mountains (400-600 m asl). The Dismal Lakes occupy the northwestern part of the bedrock depression and drain to the Coppermine River valley by the rocky and turbulent Kendall River. The Mouse River occupies the depression

to the southeast and drains a large number of lakes.

In the Dismal Lakes-Kendall River depression, a drumlin field with individual drumlins up to 2000 m long and trending between 335 and 310° indicate that the last active ice flowed toward the northwest. Adjacent to these drumlin field sequences of nested lateral moraines, valley-side kame terraces and ice-contact deltaic landforms suggest that the downwasting of a remnant ice mass in the valleys took place.

During deglaciation, the two

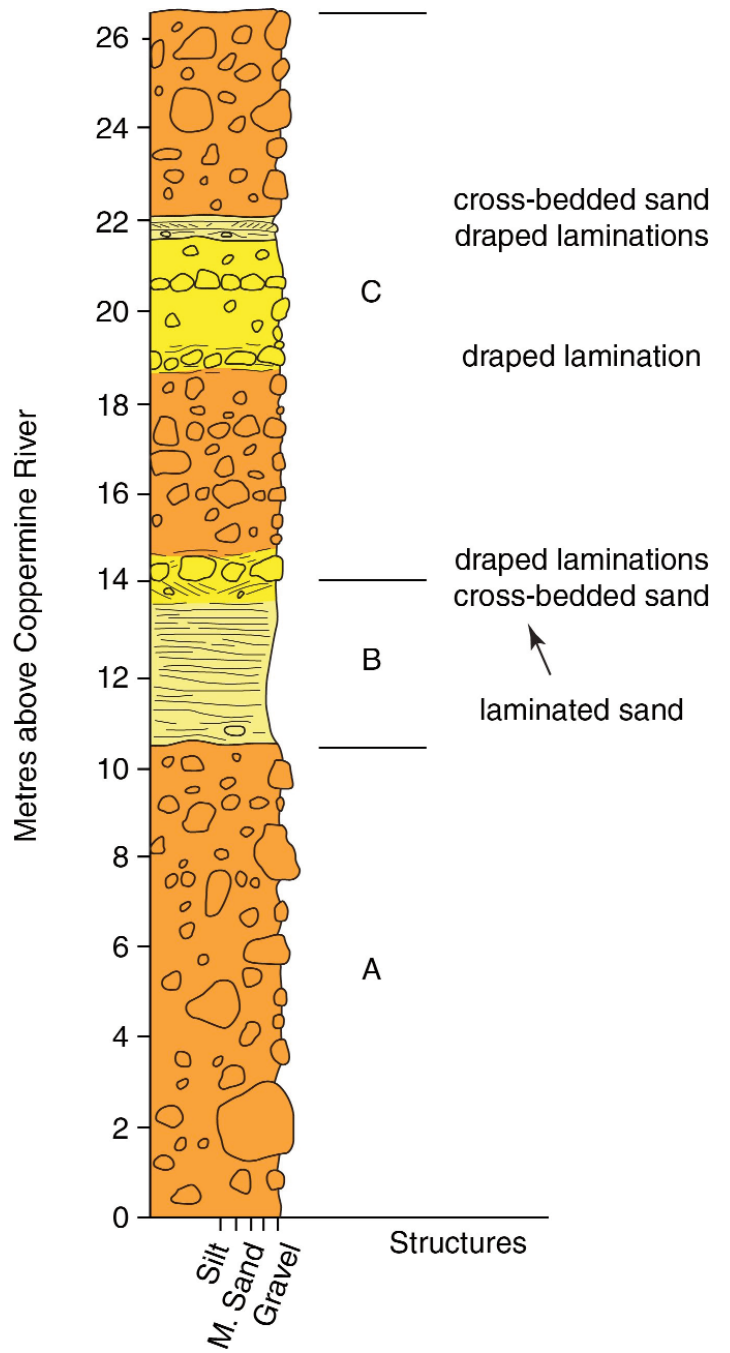


Figure 11. Section 3 km downstream from the mouth of Mouse River.

distinct depressions now occupied by Dismal Lakes were buried under a stagnant ice mass. Fluvio-glacial and debris-flow processes emplaced numerous kame and minor morainic ridges on both sides of the valley with steeper ice-contact slopes towards the basins. When the northwest basin became ice free, a large kame delta was deposited. At 285 m asl, this channelled flat-top deposit now stands 30 m above present lake level and sepa-

rates the ‘two’ Dismal Lakes. This terrain marks the water level of a lake which drained through the now abandoned spillway at the northwestern end of the Dismal Lakes, at 285 m asl into a glacial lake farther west (St-Onge and Dredge 1985).

The basin east of the Coppermine River now drained by Mouse River contains a varied suite of sediments reflecting a somewhat complex history of deglaciation (Fig. 10). A sequence of channels, deltas, and partly collapsed kames was likely formed at the margin of an ice mass which occupied the Mouse River lowlands. As the highlands to the south became ice-free, water flowed towards the lower ground and deposited sediments in a narrow embayment at the margin of the ice. In time, an ice-marginal lake was formed into which deltas were built. The disappearance of the ice resulted in the collapse of the kames and in the deltas being perched at 300 m asl on the south side of the basin (Fig. 10 Dg).

By the time glacier ice had nearly completely disappeared from the area, a lake still occupied part of the Kendall River–Mouse River basins, which was dammed by glacial ice in the valley north of September Mountains (Ice front 3, Fig. 3). At least 17 m of rhythmically bedded sandy silt and clay were deposited in this lake which was the last remnant of Glacial Lake Coppermine (Fig. 3). The bedded silt grades upward into coarse sand and planar beds, gently dipping at 330°. Large crossbeds and ripple trough crossbeds indicate a high-energy environment established during Dismal Lakes’ outlet phase of Glacial Lake Coppermine. The lake level was maintained by glacial ice which dammed the narrow Coppermine River valley to the north of Larrigan Creek. At this site (Fig. 3) an outwash delta built into the lake now forms terraces culminating at approximately 300 m asl.

The river eventually removed most of the coarsening upward sequence emplaced in the Mouse River basin. The remnants now stand as terraces 50 m above river level. In the area that was incised by the Coppermine River, an elongated fan-shaped body of coarse gravel was deposited. This channelled surface now forms a 15-m high terrace on the east side of

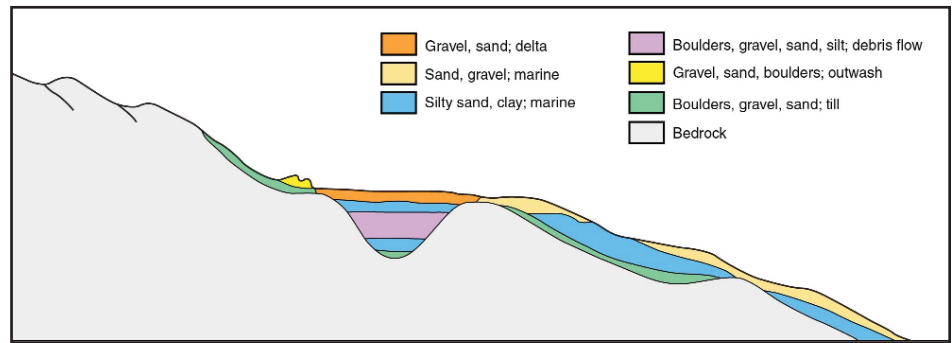


Figure 12. Diagrammatic stratigraphic section of the Coppermine River valley from September Mountains to Coronation Gulf (Fig. 1).

the river (Fig. 10, Tg 225).

North of the Dismal Lakes and the Kendall and Mouse River basins, the Coppermine River enters a narrow, steep-sided bedrock valley that cuts through the high ridges of Coppermine and September mountains. Erratics are strewn over bedrock uplands. Terraces on either side of the river are covered with generally unmodified ice-contact sediments and landforms including esker ridges.

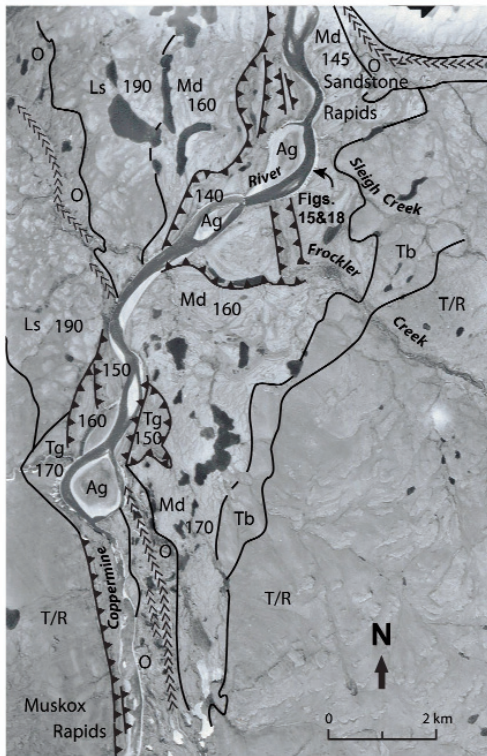
The 27-m high section on the north side of the Coppermine River (Fig. 11) has two poorly stratified sandy diamictos containing clasts up to 1.5 m in diameter. Boulders are generally well rounded and of varied lithology; a well-stratified coarse sand unit separates the two diamictos. Lower unit A is a 10.25 m thick diamicton, composed of a sand matrix supporting clasts ranging in size from pebbles to boulders over 1 m in diameter. Boulder–cobble concentrations identify poorly defined beds 1 to 2 m thick and having a slight dip to the NW. Unit B is a 3.75 m thick layer of coarse sand. Laminated fine to medium sand with lenses of coarse sand form an abrupt lower contact. The sequence coarsens upward to pebbly sand with gravel and cobbles. The upper part of the unit is marked by planar cross-stratification; interbedded sandy silt and pebbly sand layers dip at 15° toward 340°. The upper contact at the base of a boulder lag is a pebbly sand matrix with ripples. A boulder and cobble concentration forms the abrupt basal contact of unit C, which is 13-m thick composed of a series of sandy diamicton layers 1 to 4 m thick, separated by cobbly lags, in place overlain by draped laminations. These poorly sorted sediments are

interpreted as a debris flow complex resulting from rapid downcutting by the Coppermine River, following the disintegration of glacier ice north of September and Coppermine mountains. The relationship of this diamicton to the Sleigh Creek Formation (below) is not known.

Zone V: Melville Creek to Coronation Gulf Section

The Melville Creek to Coronation Gulf section (Figs. 1 and 2) contains a complex sedimentary sequence which yields an abundance of information on the postglacial history of this part of the river valley (Fig. 12). The valley of Melville Creek is partly filled with glaciofluvial sand and gravel including a large multi-crested esker complex and numerous terraces. The esker follows the east side of the Coppermine River Valley as far downstream as Willow Creek (Fig. 1) where, after a short gap, it continues on the west side of the valley. Just above Willow Creek, both sides of the esker complex are flanked by a flat gravel surface scarred by numerous abandoned channels and a few lakes (Fig. 13, Ls 190). The large delta at 160 to 170 m asl on the east side of the Coppermine River (Fig. 13) is the highest of a series constructed into the postglacial sea (St-Onge and Bruneau 1982).

Sediment sequences logged in paleo-bedrock valleys (Fig. 14) and exposed in numerous sections along the modern Coppermine River valley have made it possible to establish a lithostratigraphic diagram extending from Muskox Rapids to Coronation Gulf (Fig. 12). This represents an offlap marine sediment sequence coarsening upward from fine



Ag : Alluvium, sand and gravel
 Tg : Terrace of bouldery gravel and sand
 Ls : Glaciolacustrine fine and sand
 Md : Marine deltaic bouldery gravel
 O : Glaciofluvial gravel and sand
 Tb : Till blanket cover lodgment and basal meltout
 T/R : Discontinuous till and bedrock knobs

▲▲▲ Terrace scarp
 <<<<<<< Esker ridge
 300 : Elevation in m a.s.l.

Figure 13. Air photograph of Sleigh Creek area. This air photograph, part of A-23634-97, shows the regional setting of the section between Fockler and Sleigh creeks on the east side of the Coppermine River (Figs. 15 and 18). A large esker complex which originates in Melville Creek south of the photograph follows the east side of the river before heading in a northwest direction. On the west side of the Coppermine River glaciolacustrine fine sand and silt mantle hummocky topography up to 190 m asl. Below 170 m asl a large delta built into the post glacial sea. Numerous terraces have been carved in this deposit by the Coppermine River.

sand–silt–clay rhythmite deposits to bouldery gravel deltas. A 30-m thick diamicton complex is located in the middle of these marine sediments and was named the Sleigh Creek Formation by St-Onge and Lajoie (1986).

The Sleigh Creek Formation (Figs. 13 to 18) is bracketed by sequences of very fine sand, silt and clay in horizontal beds 5 to 50 cm thick that have sharp upper and lower contacts, and are normally graded. In at least two 2-m horizons, the beds have been intensely contorted by subaqueous mass flow events. The lower and upper rhythmite sequences have

variable thicknesses; the lower rhythmite sequence is up to 14 m thick (Fig. 12; Bruneau 1985), whereas the upper sequence has a maximum exposed thickness of 3 m. Sections 1.5 to 2 km upstream of Bloody Fall (Figs. 1 and 12) show up to 70 m of rhythmites on boulder-covered bedrock. In these sections, the diamicton sequence is not present suggesting that it forms a northward-thin-



Figure 14. View looking east of the Sleigh Creek paleo-valley filled with debris flow diamicton covered by sand and gravel of the 165–170 m asl marine delta (Fig. 13).



Figure 15. Contact between units A and B in the Sleigh Creek section (Fig. 18); Dr. Paul Hoffman in foreground.

ning wedge and that the flows responsible for their transportation did not reach this far north. Marine shells have been found in the upper rhythmite sequence, below 110 m asl, and also in the sand layers overlying it. The rhy-



Figure 16. Sand and silt layer in the upper unit B (Fig. 18) of the Sleigh Creek section.

Figure 17. Sand and silt layer shown in Figure 16 resting on stony diamicton.

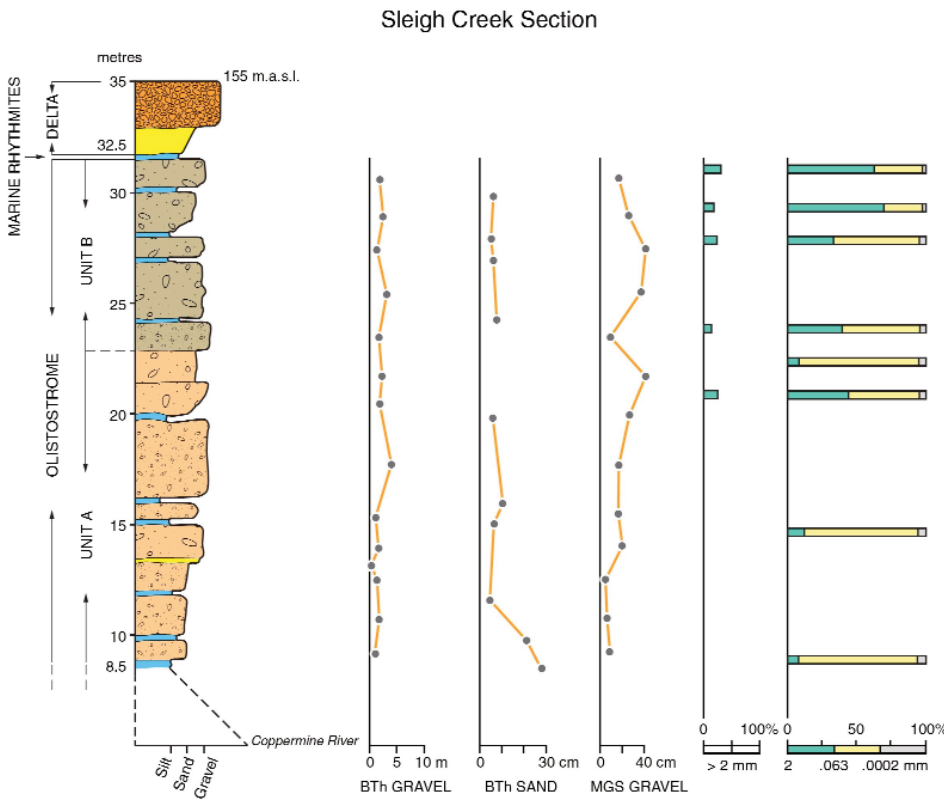


Figure 18. Stratigraphy of the Sleigh Creek section with variations in bed thickness (BTh), maximum grain size (MGS) and granulometry of the matrix.

mite sequences form a package that extends to the present sea coast and, presumably, below Coronation Gulf. The sedimentary characteristics and the presence of marine shells near the top of the stratigraphic column strongly suggest that the sediments of the rhythmite sequences were emplaced by turbidity currents in a marine basin (Lajoie and St-Onge 1985).

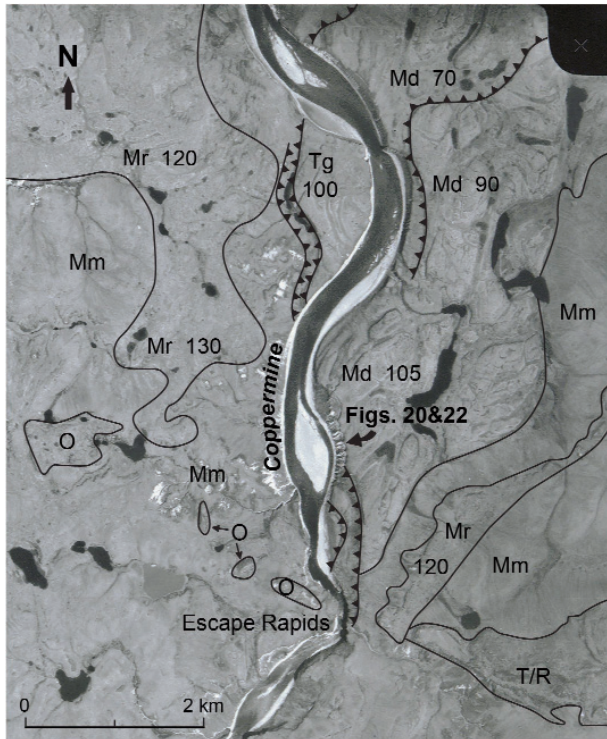
The sections described below

include all of the units and sedimentary characteristics of the Sleigh Creek Formation. Several other sections along the Lower Coppermine River also show one or more of the units described.

The Sleigh Creek section (Figs. 13 to 18) extends for 1.5 km on the east side of the Coppermine River just upstream from the mouth of Sleigh Creek (Fig. 13). The bedrock walls of

the buried channel are well exposed at both ends of the section. Erosion by the Coppermine River along the entire length of the section has provided excellent exposures of the channel fill. Total thickness of the section is 45 m. The lowermost 8.5 m is largely talus although bedrock is sporadically exposed. Two exposed diamicton units have a minimum thickness of 23 m. The upper 13.5 m is coarse sand and the bouldery talus of the uppermost delta built into the postglacial sea (St-Onge and Bruneau 1982). At the south end of the section, fine sand and silt rhythmite layers are draped over the few large clasts protruding from the uppermost diamicton bed.

The Escape Rapids section (Figs. 19 to 22) extends for over 500 m on the east side of the valley. Roughly 70 m of channel fill are exposed and consist of two diamicton units having a combined thickness of 50 m. This sequence is overlain by 10 m of coarse sand and bouldery gravel, part of a postglacial marine delta. In a gully at the north end of the section, thick silt and fine-sand rhythmite deposits are exposed at the same level as the diamictons. Individual beds are up to 1.5 m thick suggesting that these are proximal turbidites. Small fragments of marine shells were found, but none in life position. In the same part of the section, a poorly exposed unit of sandy silt rhythmite occurs between the diamicton sequence and the overlying deltaic sediments.



Ag : Alluvium, bouldery gravel
 Tg : Terrace of bouldery gravel and sand
 Mr : Marine littoral sediments, coarse sand and gravel
 Mm : Marine nearshore sediments, fine sand and silty sand
 O : Glaciofluvial gravel and sand
 T/R : Discontinuous till and bedrock knobs
 Terrace scarp

Figure 19. Air photograph of Escape Rapids area. This Escape Rapids area, where the section described in Figure 15 is located, is illustrated in this air photograph, part of A-21510-92. The rapids developed over a gabbro sill which forms a cuesta east of the river. A large marine delta of bouldery gravel lies lower in elevation than the adjacent, older marine sediments of sand and silt. A network of braided paleochannels is well preserved on the delta surface.

The Diamicton Sequence

In both sections studied the diamicton sequence is composed of a lower Unit A and an upper Unit B (Figs. 18 and 22). Colour distinguishes the diamicton units; Unit A is light buff whereas Unit B is a light brown. In both sections, the matrix of Unit A in the diamicton is siltier (30% sand, 65% silt, 5% clay) than Unit B (55% sand, 40% silt, 5% clay). On average, clast size is smaller in Unit A than in Unit B. Clasts are less abundant in Unit A averaging 25 to 30%; in Unit B they make up to 50% of the deposit.

In the Escape Rapids section (Figs. 20, 21 and 22) a 4-m thick band of interfingering silty sand lenses and irregular thin beds of diamicton mark

the upper limit of Unit A. In the Sleigh Creek section (Figs. 16 and 18) the top of Unit A is a 2.8 m bed of gravel in a silty matrix; large clasts are rare.

Upper Unit B is a sequence of dark brown sandy diamicton beds. In the Escape Rapids section (Fig. 21), the basal bed of the unit is a bouldery diamicton with individual clasts up to 60 cm in diameter. The bed in the same stratigraphic position in Sleigh Creek section (Figs. 17 and 18) is a very pebbly diamicton with individual clasts seldom larger than 5 cm.

The diamicton beds range in thickness from 1 to 7 m. The basal contact with the underlying sediments is sharp and not obviously erosive;

there is no sign of channelling within the two diamicton sequences. Beds are easily identified by the presence of thin interbeds of generally massive, but locally crossbedded, fine to very coarse sand; climbing ripples were seen at only one location. Within the diamicton sequences, the beds are generally massive; traction structures are absent, and reverse grading was observed in two beds. The large clasts commonly have long axes both parallel and perpendicular to bedding. The clasts in the diamicton range up to boulder size. They vary considerably in size both from bed to bed and laterally within individual beds. Well rounded cobbles and boulders make up variable proportions of the sediments.



Figure 20. Section on the east side of the Coppermine River valley downstream from Escape Rapids (Fig. 19) showing numerous diamicton layers. Marine nearshore sand and silt.



Figure 21. Some of the diamicton layers separated by pebbly sand layers at the base of Unit B (Fig. 22) of the Escape Rapids Section.

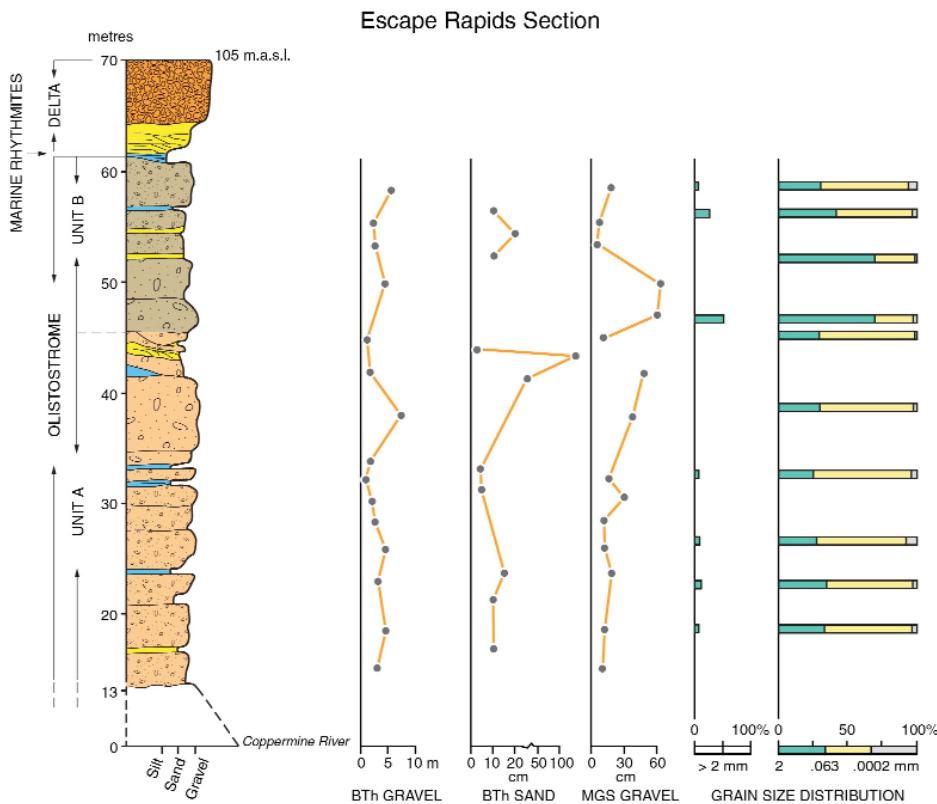


Figure 22. Stratigraphy of the Escape Rapids section with variations in bed thickness (BTh), maximum grain size (MGS) and granulometry of the matrix.

To evaluate the provenance of the diamicton, clasts larger than 5 cm in diameter were systematically sampled along a vertical profile in the Sleigh Creek section. In the lower diamicton (Unit A), 58% of the sample has local provenance, the other clasts are derived from sources outside the Coppermine Homocline (Baragar and Donaldson 1973), mostly from the area of Wopmay Orogen to the south (Hoffman 1984). In the upper diamicton (Unit B), 56% of the sample is of local provenance, and the balance from other sources. As a whole, 40 to 45% of the fragments in the Sleigh Creek diamicton represent rock types that are not present in the Coppermine Homocline. In comparison, the study of fragment composition in the till suggests a much higher percentage of locally derived rock types.

The most striking difference between the diamicton of the Sleigh Creek Formation and the regional till is colour. The Sleigh Creek Formation is light buff to brown whereas the till matrix has a distinctly reddish tinge derived from red sandstone and shale. Other fundamental properties distin-

guish the channel fill from the till: a) the diamictons of the fill were deposited in distinct layers interbedded with sand and gravel, and b) the clasts, within the fill, average 40 to 50% of far-travelled erratic material. In contrast, although exposures of till are poor, the deposit appears massive with an erratic content of less than 25%. These data indicate that the diamicton sequence and the local till have distinct rock types and provenance.

Discussion

The model proposed for the accumulation of the Sleigh Creek Formation is summarized in Figure 23, which represents a section along the fill in a bedrock valley that cuts across a cuesta landscape. The coarse fraction of the Sleigh Creek Formation is matrix supported; the beds are massive or inversely graded, and have sharp non-erosive contacts and traction structures are absent. These characteristics suggest that the coarse fraction was deposited by a debris flow. In this type of deposit each bed results from a single flow event in which matrix strength is the main clast support mechanism.

Lack of imbrication and grading in the Sleigh Creek diamicton indicates a lack of clast to clast movement during flow. The high degree of roundness of the gravels is an inherited feature from previous depositional cycles, and is characteristic of gravel and till in the Wisconsin drift of the region.

The rhythmite sequences that underlie the diamicton are thought to have been emplaced by turbidity currents generated by the massive sediment flux at the outlet of the Coppermine River. The overlying rhythmite sequences also accumulated from turbidity currents, but originated in deeper water at the front of the rapidly building bouldery delta at 165 m asl. Since the diamicton sequence is deposited between marine rhythmite layers it is likely that deposition occurred in a subaqueous environment. The Sleigh Creek Formation is an exceptionally well exposed, early post-glacial olistostrome.

DEGLACIATION PHASES

The information required to construct a time-constrained model of ice retreat in the Coppermine River valley region, extending from Point Lake to Coronation Gulf, was gathered through systematic geological mapping in the area by the Geological Survey of Canada between 1979 and 1984 and, from 1985 to 1989, for regions to the north and northwest. From the distribution of sediments (described in the first part of this paper) it is now possible to propose a general model of Late Wisconsinan ice retreat. The four ice front phases described are not defined by continuous ice-contact deposits. Mostly, the margins are surmised from the configuration of glacial lakes in the Coppermine, Kendall and Richardson river valleys, and are based on the reasoning that lake levels determined from sedimentary deposits require that regions lying below those levels were occupied by glacier ice. Also, both location and elevation of deltas, built in glacial lakes, can be used to discern ice-front positions. Another criterion is side-hill or lateral channels and kames, which could only have been formed by a stream confined on one side by glacier ice.

The ice fronts define significant events in the course of ice retreat

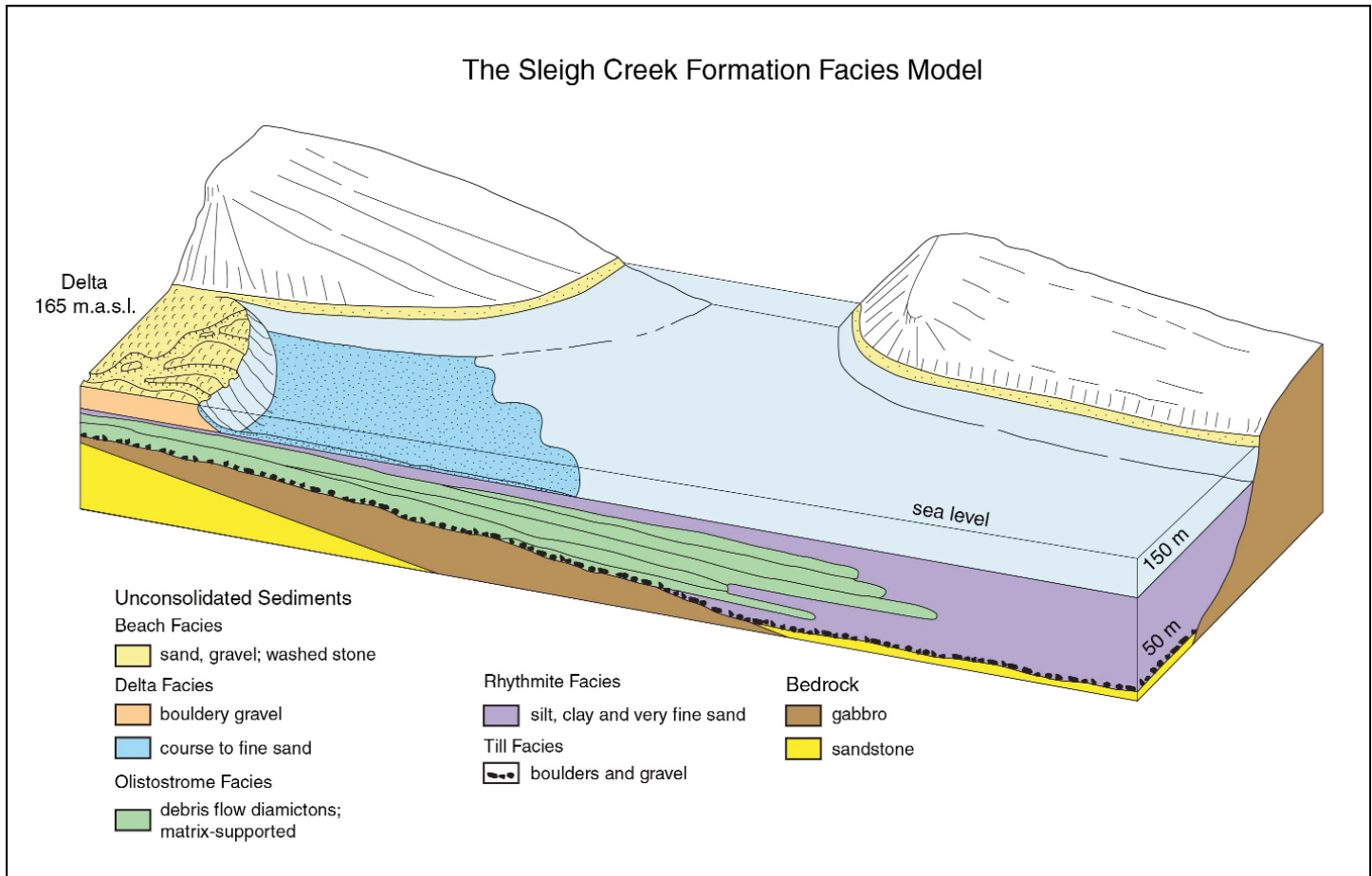


Figure 23. The Sleigh Creek Formation facies model.

to which a tentative age can be assigned, in large part due to a major synthesis of deglaciation of central and northern Canada by Dyke (2004).

Model of Ice Retreat

Phase 1: Forcier Lake Moraine

The most westerly of the former ice-front positions determined in this study were established during the Forcier Lake Moraine phase (Fig. 3). The Forcier Lake Moraine is located approximately halfway between McTavish Arm of Great Bear Lake and the Coppermine River and is described by St-Onge et al. (1981). This moraine is a single 5 to 20 m high ridge that extends northward for nearly 60 km. It is composed of boulders, up to 3 m in diameter, in a sand-gravel matrix. West flowing meltwater breached the ridge and deposited small sand and gravel outwash fans; these are covered by string bogs in many places. Its eastern slope is generally steeper than the west; this, along with fans on

the west side, indicates the Forcier Lake Moraine was constructed by west-flowing ice. According to Dyke (2004), the Forcier Lake Moraine is correlative with a late phase of the Bluenose Lake Moraine (St-Onge and McMartin 1995) and would be part of the 10.25 ^{14}C ka BP phase (Dyke 2004). This would place the Forcier Lake Moraine Phase within the Younger Dryas Chronozone (11–10 ka BP). The Dismal Lakes basin was completely occupied by ice at this time and meltwater eroded a 4 km long and 30 to 50 m deep channel at the western end of the lake basin. A large sand plain was deposited west of Dismal Lakes and north of Dease River (St-Onge and Dredge 1985).

The ice front flowed around a 550-m high plateau north of the western part of Dismal Lakes. Ice-marginal lakes formed between this plateau and the ice lobe in the basin of Richardson and Rae rivers. Numerous kames and deltas at approximately 270 m asl with collapse structures to the north mark

this frontal zone.

Phase 2: Glacial Lake Coppermine

During ice retreat between deglaciation phases 1 and 2 (Fig. 3), the Coppermine River valley from Rocknest Lake to 10 km south of the Kendall River was ice-free and was occupied by Glacial Lake Coppermine. The outlet of the lake was at 365 m asl through Kamut Lake and Sloan River (St-Onge et al. 1981). Near Rocky Defile Rapids, the former ice front is marked by a massive deposit of sand, gravel and boulders filling a pre-glacial section of the Coppermine River Valley (Fig. 9).

In the Scotstoun Lake region, meltwater eroded 30 to 40 m deep, box section gorges in slate that underlies the divide between Rocknest Lake and the Hepburn and Coppermine rivers. At the downstream ends of these canyons, coarse sand and gravel deltas were built at 365 m asl into Glacial Lake Coppermine. This elevation clearly indicates that the melting of the Scotstoun Lake ice, the carving of the

rock canyons and the construction of the deltas were synchronous with the Kamut outlet phase of Glacial Lake Coppermine (St-Onge and Guay 1982).

North of Rocknest Lake, the ice front was located at the headwaters of White Sandy River (Fig. 3). Rhythmite deposits and sand terraces are part of the Glacial Lake Coppermine suite of sediments and indicate that the river valley was ice-free and well nourished with medium- and fine-grained sediment.

North of the point where the White Sandy River flows into the Coppermine River, numerous perched gravel deltas are found east and north of the Coppermine River valley. Because the deltas are large and consist of coarse bouldery gravel, their construction required a high energy flow that could only have come from meltwater streams from glacier lying no farther away than the present divide, an average distance of less than 15 km.

An ice tongue occupied the southeastern part of the Dismal Lakes basin. Here, a moraine of bouldery till was deposited across the valley of the Dismal Lakes on the distal side of which, a thick apron of coarse outwash gravel was deposited in a lake. The altitude of the outlet was controlled by the sill elevation at 285 m asl of the channel cut at the western end of the lake during Phase I. This deglaciation phase is correlative with the 10 400–10 200 years BP Central Wollaston Peninsula phase (Dyke et al. 2003). Glacial Lake Coppermine is thus a major feature of the late Younger Dryas Chronozone.

Phase 3: Mouse and Richardson Rivers

In the Kendall River–Dismal Lakes valley, a retreat of 1 to 5 km from ice position 2 opened a channel just north of Rocky Defile Rapids at 300 m asl (Fig. 3). When this occurred, the Kamut Lake outlet was abandoned, and Glacial Lake Coppermine drained northwest, through this new, lower outlet. Following this, drainage may have been through the 285 m asl channel at the western extremity of Dismal Lakes, as was previously assumed (St-Onge 1980; St-Onge et al. 1981) or it could have been across a saddle north of Dismal Lakes at 275 m asl, allowing

Glacial Lake Coppermine to drain into the Richardson River basin. There is no well defined channel in the narrow wind gap found there to substantiate this, but this may be because the drainage was partly across dead ice, or because active scree accretion has buried the channel.

Along the western tributary of the river north of Hope Lake, a series of stepped deltas of bouldery gravel testify to the rapid lowering of ice marginal lake levels as a consequence of the rapid shrinking of the Richardson–Rae rivers ice lobe (St-Onge and McMartin 1995; Dyke et al. 2003).

Phase 4: Postglacial Sea

During Phase 4 (Fig. 3) the ice in Coronation Gulf thinned rapidly as a result of calving into the Arctic Ocean to the northwest. West of Coronation Gulf, retreat of the ice front allowed the glacial lakes to drain by a series of side-hill channels.

The disintegration of the ice in Coronation Gulf and in the lowlands to the south resulted in marine inundation of the isostatically depressed lowlands to a present elevation of 170 m asl (St-Onge and Bruneau 1982). Within the Coppermine River valley a large bouldery delta at 165 m asl (Figs. 13 and 23) marks this limit as do numerous other deltas east of the Coppermine River and south of Coronation Gulf. All deltas show ice-contact features proximally indicating that dead ice was still present at this stage. This marine transgression marks the termination of the Late Wisconsinan glaciation in the Coppermine River valley and the beginning of the emplacement of an offlap sedimentary sequence between Muskox Rapids and Coronation Gulf (Fig. 12).

DATING

The events discussed are rarely dated directly and generally only minimum ages can be assigned. Table 1 in St-Onge and McMartin (1995), lists the significant radiometric dates along Dolphin and Union Strait to the northwest of Coronation Gulf (Fig. 1). In the Coronation Gulf area (Fig. 1) dates range from $9\,880 \pm 90$ to $10\,530 \pm 260$ ^{14}C years BP (St-Onge 1987). However Dyke (2004) argued for the exclusion of dates based on deposit-feeding

marine molluscs from calcareous sediment as being too old. Furthermore, England et al. (2012) demonstrated that, “*The age discrepancy between suspension and deposit feeders in calcareous terrain is non-systematic in space and time thereby invalidating the application of a correction.*” Therefore, given that many of the earlier dates can no longer be considered reliable, indicators of the time when Coronation Gulf (Figs. 1 and 3) was freed from glacial ice, must be based on the deglaciation reconstruction by Dyke (2004), in which Coronation Gulf is shown as becoming ice-free between 10 000 and 9 600 ^{14}C BP. However, for the lake to exist, glacier ice must have blocked the valley north of Rocky Defile where the top of the paleo-valley infill is at 310 m asl (Fig. 9). This implies that a substantial amount of glacier ice existed north and northwest in the Richardson River basin and in Coronation Gulf (Phase 2, Fig. 3) and an ice front was continuous with the Central Wollaston Peninsula phase (Dyke et al. 2002) dated at 10.2 ± 0.1 – 10.4 ± 0.1 ka. Glacial Lake Coppermine is estimated to have lasted a minimum of 450 years (St-Onge et al. 1981) and was a significant feature in the deglaciation landscape during the late Younger Dryas Chronozone. This interpretation requires that the 10.25 ^{14}C ka BP paleogeographic map (Dyke 2004) be modified so that the Coppermine River Valley was ice free at this time.

A calcareous concretion washed out from the base of the varve sequence of Glacial Lake Coppermine has yielded a ^{14}C age of $14\,400 \pm 500$ ^{14}C years BP (UQ-814). This is ca. 3 800 years older than the estimate for the Glacial Lake Coppermine above and appears old relative to all the generally accepted models of deglaciation (Dyke 2004).

SUMMARY AND CONCLUSIONS

The deglaciation model presented here explains the morphosedimentary units of late Quaternary age, in the Coppermine River valley region, as a continuum from glacial to glaciolacustrine to marine environments.

The postglacial history clearly demonstrates that the transition period from a glacial to a nonglacial environment was a time of great environmen-

tal change involving multiple phases in the activity of geological processes. Meltwater was moving vast amounts of sediment that was deposited as outwash complexes or in glaciolacustrine sequences.

When the ice receded from the Coronation Gulf region, glacial lakes drained and the sea inundated the depressed land. In incising through the glacial lake sediments, the Coppermine River mobilized enormous volumes of unconsolidated glacial lake sediment that occupied the preglacial valley. The resulting debris flows, rapidly filled a network of bedrock valleys that were then below sea level. Very large deltas, the highest of which are at 170 m asl, were built into the receding sea while tens of metres of silty rhythmites were being deposited in the deeper part of the paleobasin.

By comparison the present day geological processes in the Coppermine River valley region are subtle and the landscape is essentially quiescent. The roaring rapids, the picturesque falls, the minor landslides and the churning of surface material by frost action do not significantly modify landforms inherited from the brief and turbulent period of ice retreat.

ACKNOWLEDGEMENTS

Fieldwork for this project was made possible initially by a grant from the Rector's fund, University of Ottawa. Later grants from Natural Sciences and Engineering Research Council, Energy, Mines and Resources (now NRCan), and Indian Affairs and Northern Development now AAND), allowed graduate students to become involved. Of the many individuals who helped the author and his students, Dr. Paul Hoffman is certainly the one I am most indebted to; he and his senior field assistant Dr. Marc St-Onge convinced me to go back to field work and map the Quaternary sediments in the Coppermine River region. One summer in the field with Paul's group led me, in 1982, to leave academic life and go back to the tundra, thus the rest of my career was defined. Their sustained help with field logistics made possible the systematic mapping of the surficial deposits of the Coppermine River basin. Dr. Jean Lajoie, retired from the département de géologie, université de

Montréal, provided essential expertise in the study of the Sleigh Creek Formation. Thanks are also due to Dr. W. Padgham, Chief Geologist, Department of Indian Affairs and Northern Development, Yellowknife, whose office provided grants to students, expert radio expediting during the field season and very much appreciated access to fixed wing aircraft. Pilots, mining camp managers and colleagues who helped in a variety of ways are assured of my deep gratitude. Comments by Marc St-Onge, Art Dyke and two anonymous reviewers which helped improve an earlier version of this paper are greatly appreciated. The figures were drafted by Tracy Barry and Kim Nguyen whose talents transformed sketches into art.

REFERENCES

- Baragar, W.R.A., and Donaldson, J.A., 1973, Coppermine and Dismal Lake map areas: Geological Survey of Canada, 71-39, 20 p. and Maps 1337A and 1138A.
- Bruneau, H. C. 1985, Séquence sédimentaire du secteur aval de la rivière Coppermine, Territoires du Nord-Ouest: *Géographie physique et Quaternaire*, v. XXXIX, No 3 p. 315-322
- Dyke, A.S., 2004, An outline of North American deglaciation with emphasis on central and northern Canada, *in* J. Ehlers and P.L. Gibbard, *eds.*, *Quaternary Glaciations—Extent and Chronology*, Part II, North America: Amsterdam, Elsevier, *Developments in Quaternary Science*, v. 2b, p. 373-424.
- Dyke, A.S., Andrews, J.T., Clark, P.U., England, J.H., Miller, J.H., Shaw, J., and Veillette, J.J., 2002, The Laurentide and Inuitian ice sheets during the last Glacial Maximum: *Quaternary Science Reviews*, v. 21, p. 9-31, [http://dx.doi.org/10.1016/S0277-3791\(01\)00095-6](http://dx.doi.org/10.1016/S0277-3791(01)00095-6).
- Dyke, A.S., St-Onge, D.A., and Savelle, J.M., 2003, Deglaciation of Southwestern Victoria Island and adjacent Arctic Mainland, Nunavut – Northwest Territories: Geological Survey of Canada Map 2027A, scale 1:500 000.
- England, J., Dyke, A.S., Coulthard, R.D., McNeely, R., and Aitken, A., 2012, The exaggerated radiocarbon age of deposit-feeding molluscs in calcareous environments: Boreas, (Article first published online: 27 APR 2012), <http://dx.doi.org/10.1111/j.1502-3885.2012.00256.x>.
- Franklin, J., 1823, Narrative of a journey to the shore of the polar seas in the years 1819-1822: London, John Murray: Edmonton, Hurtig, 1969, 768 p.
- Hoffman, P.F., 1984, Geology, Northern Internides of Wopmay Orogen, District of Mackenzie, Northwest Territories: Geological Survey of Canada, Map 1567A, scale 1:250 000.
- Lajoie, J., and St-Onge, D.A., 1985, Characteristics of two Pleistocene channel fill deposits and their implication on the interpretation of megasequences in ancient sediments: *Sedimentology*, v. 32, p. 59-67, <http://dx.doi.org/10.1111/j.1365-3091.1985.tb00492.x>.
- St-Onge, D.A., 1980, Glacial Lake Coppermine, north-central District of Mackenzie, Northwest Territories: *Canadian Journal of Earth Sciences*, v. 17, p. 1310-1315, <http://dx.doi.org/10.1139/e80-137>.
- St-Onge, D.A., 1984, Surficial deposits of the Redrock Lake area, District of Mackenzie, *in* *Current Research, Part A*, Geological Survey of Canada, 84-1A, p. 271-278.
- St-Onge, D.A., 1987, Excursion Guidebook A-22, XII International INQUA Congress; Quaternary geology and geomorphology of the Lower Coppermine River Valley, District of Mackenzie: National Research Council of Canada, 32p.
- St-Onge, D.A., 1988, Coppermine River, District of Mackenzie, N.W.T., Composite map of the following mapsheets: 83 G, Redrock Lake; 83 J, Hepburn Lake; 86 N, Dismal Lakes; 86 O W1/2, Coppermine; Geological Survey of Canada, Map 1645A.
- St-Onge, D.A., and Bruneau, H.C., 1982: Dépôts meubles du secteur aval de la rivière Coppermine, Territoires du Nord-Ouest, *dans* *Recherches en cours*, partie B, Commission géologique du Canada, 82-1B, pp. 51-55.
- St-Onge, D.A., and Dredge, L., 1985, Northeast extension of Glacial Lake McConnell in the Dease River basin, District of Mackenzie, *in* *Current Research, Part A*, Geological Survey of Canada, 85-1A, pp. 181-186.
- St-Onge, D.A., and Geurts, M.-A., 1982, Les formes d'effondrement et le mode de déglaciation de la région du lac Qingaluk, Territoires-du-Nord-Ouest, Canada: *Géographie Physique et Quaternaire*, v. 36, p. 233-240, <http://dx.doi.org/10.7202/032479ar>.
- St-Onge, D.A. and Guay, F. 1982, Quaternary geology of upper Coppermine River valley, District of Mackenzie, *in* *Current Research, Part A*, Geological Survey of Canada, Paper 82-1A,

p. 127-129.

St-Onge, D.A., and Lajoie, J., 1986, The late Wisconsinan olistostrome of the lower Coppermine River valley, Northwest-Territories: Canadian Journal of Earth Sciences, v. 23, p. 1700-1708, <http://dx.doi.org/10.1139/e86-157>.

St-Onge, D.A. and McMartin, I., 1995, Quaternary Geology of the Inman River Area, Northwest Territories: Geological Survey of Canada Bulletin 446, 59 p, Map 1846A.

St-Onge, D.A., Geurts, M.A., Guay, F., Dewez, V., Landriault, F., and Léveillé, P., 1981, Aspects of the deglaciation of the Coppermine River region, District of Mackenzie, *in* Current Research, Part A, Geological Survey of Canada, 81-1A, p. 327-331.

Received April 2012

Accepted as revised August 2012